

Installation Guide

I/O Monitor2



CAN Bus Node

DC Power Supply Systems

Generic Applications (T2)

Information in this document is subject to change without notice and does not represent a commitment on the part of *Eltek Valere*.

No part of this document may be reproduced or transmitted in any form or by any means — electronic or mechanical, including photocopying and recording — for any purpose without the explicit written permission of *Eltek Valere*.

Copyright ©: *Eltek Valere*, 2016



NS-EN ISO 14001 Certified



Certificate No:
11276-2007-AE-NOR-NA

NS-EN ISO 9001 Certified



Certificate No:
4072-2007-AQ-NOR-NA

| I/O Monitor Types | | | |
|-------------------|--------------|--|-------------------------|
| Part Number | Type | Description | Installation Guide |
| 242100.304 | I/O Monitor | Type 1 (T1), for Outdoors applications | 351503.033 |
| 242100.502 | I/O Monitor2 | Type2 (T2), generic unit without the Outdoor functions | 351509.033 (this guide) |
| 242100.306 | I/O Monitor3 | Type3 (T3), similar to Type 1 but with support for Solar hybrid functions (fuel tank and wind measurements, etc) | 351503.033 |

351509.033 **Issue 2.0, 2010 Sep**

Published 2010-09-07

mafe

Table of Contents

| | |
|---|-----------|
| 1. Introduction | 4 |
| About this Guide | 4 |
| System Diagram — CAN Bus Nodes | 4 |
| 2. I/O Monitor2 CAN Bus Node | 5 |
| Key Features | 5 |
| Typical Applications | 5 |
| 3. Installation of I/O Monitor2 | 6 |
| Safety Precautions..... | 6 |
| Basic Installation Steps | 6 |
| Location of Connectors, Ports, LEDs | 7 |
| Fastening / Unfastening the I/O Monitor2..... | 8 |
| Connection Drawing | 9 |
| CAN Bus Termination | 10 |
| Configuration..... | 11 |
| CAN Bus Addressing | 11 |
| Configuration in PowerSuite | 12 |
| 4. Technical Specifications..... | 13 |

1. Introduction

Congratulations on your purchase of the *I/O Monitor2 CAN Bus Node*, an intelligent “plug-and-play” module used to decentralize and expand the functionality of your DC power supply system.

About this Guide

This booklet provides you with the required information for installing the *I/O Monitor2 CAN Bus Node* in your *Smartpack* or *Smartpack2* based DC power supply system. The booklet also presents the *I/O Monitor2*’s technical specifications.

For information about how to activate and configure the *I/O Monitor2* node, click on the Help button on the toolbar of the *PowerSuite* or *WebPower* configuration programs. Or read the *Smartpack2 Master Controller* user guide (Doc 350020.013), if you use the controller’s front keypad to configure the nodes.

System Diagram — CAN Bus Nodes

The *I/O Monitor2 CAN Bus Node* is used as a building block in *Smartpack2* based power supply systems, see Figure 1. Other CAN bus nodes, like the *Battery Monitor* and the *Load Monitor*, may also be connected to the bus. The nodes are powered directly from the CAN bus, and have dedicated inputs and outputs that expand the system monitoring and controlling capability.

The *Smartpack2* control system consists of the *Smartpack2 Master* and the *Smartpack2 Basic* controllers. The *Smartpack2 Master* serves as the local user interface between you and the system. The *Smartpack2 Basic* monitors and controls the power system’s internal wiring, supplies the CAN bus with power and takes full control if the master controller fails. The *WebPower* application enables you to configure and operate the system from your computer’s standard web browser.

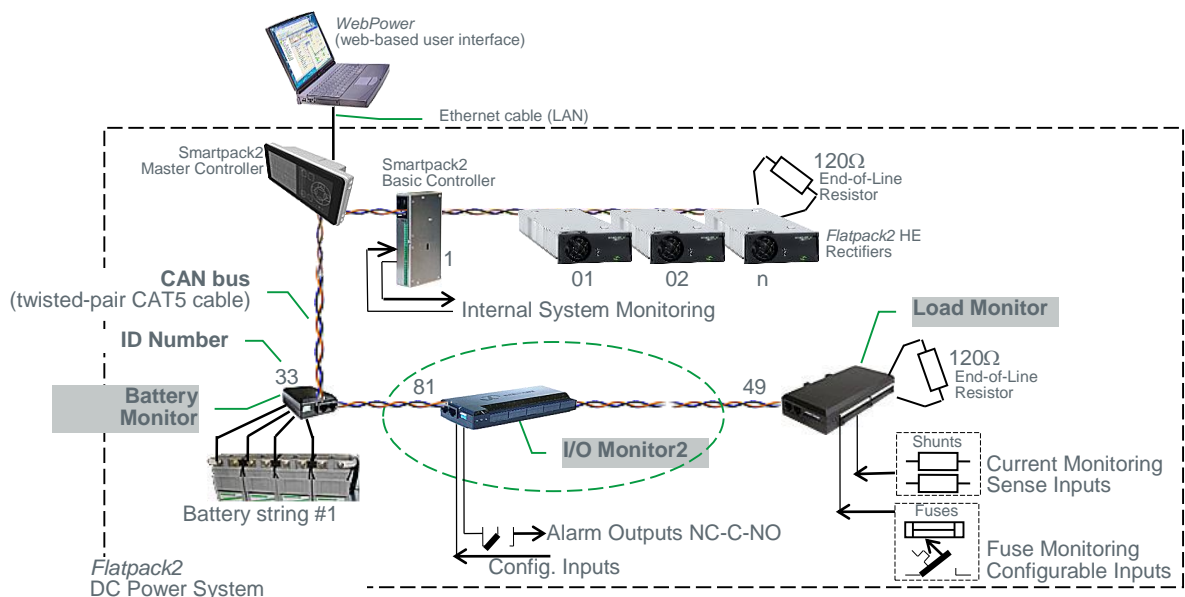


Figure 1 Example of three CAN bus nodes connected in a *Flatpack2* DC Power Supply System

2. I/O Monitor2 CAN Bus Node

The *I/O Monitor2 CAN Bus Node* (T2) is a generic, cost-effective module that enables you to decentralize and increase the number of input monitoring and output controlling signals in your *Smartpack* or *Smartpack2* based DC power supply system.

Refer to guide 351503.033 for description of the *I/O Monitor* (T1, Outdoor) and the *I/O Monitor3* (T3, Solar Hybrid) CAN bus nodes.

Key Features

A wide range of features are implemented in the *I/O Monitor2 CAN Bus Node*, as mentioned below:

- ✓ Powered via the CAN bus; no external power supply required
- ✓ Firmware upgrade via the CAN bus (see required “SW Upload tools” on page 13)
- ✓ 6 user programmable voltage-free relay outputs for traditional remote control
- ✓ 6 user programmable and configurable inputs for fuse monitoring and other site equipment monitoring
- ✓ Storage of calibration data and real time event log
- ✓ Setup, configuration and calibration via *WebPower* in your computer’s standard web browser
- ✓ Flexible mounting using Velcro hook-and-loop fasteners or the snap-lock tabs underneath
- ✓ Up to 14 *I/O Monitor* modules (any type) may be connected to the CAN bus
- ✓ CAN bus addressing via DIP switches

Read also chapter “Technical Specifications”, page 13, for more details.

Typical Applications

The *I/O Monitor2 CAN Bus Node* (T2) is employed in *Smartpack* and *Smartpack2*-based DC power systems, to implement flexible expansion and distribution of system functionality.

3. Installation of I/O Monitor2

You can install the *I/O Monitor2 CAN Bus Node* if your DC power system meets the following requirements:



1. Your system's controller is either the *Smartpack2 Basic* or the *Smartpack* controller with firmware version 2.04 or higher installed
2. Your system's controller has an Ethernet port, or you have a PC with *PowerSuite* application version 2.4 or higher installed

You need standard installation tools and equipment used by an authorized electrician.
NOTE: All tools must be insulated.

Safety Precautions

Follow these precautions during installation, commissioning and general handling of the DC power supply system.



CAUTION: For safety reasons, the **commissioning and configuration of the equipment is only to be performed** by Eltek Valere's personnel or by authorized and qualified persons; otherwise the warranty may be invalidated.

Please, **read the user documentation carefully** before installing and using the equipment, as installation and operation is to be performed as described in it.

Basic Installation Steps

Carry out these steps to install the *I/O Monitor2 CAN Bus Node* in your DC power system.

Power is ON!

1. **Assign the *I/O Monitor2* node's CAN bus address**, by setting the *I/O Monitor2*'s DIP switches. Read to chapter "CAN Bus Addressing", page 11
2. **Connect the node to the CAN bus**, by e.g. using a CAN bus cable and moving the CAN bus termination plug from the controller to the last connected *I/O Monitor2*.
Read chapter "CAN Bus Termination", page 10
3. **Attach the *I/O Monitor2* box to dedicated slots or to a suitable surface**;
Read chapter "Fastening / Unfastening the *I/O Monitor2*", page 8
4. **Connect the required input and output cabling to the node's terminals**;
Read chapter "Connection Drawing", page 9
5. **Configure the *I/O Monitor2* node's operation**, using *WebPower* in your standard web browser or the *PowerSuite* application, read chapter "Configuration in *PowerSuite*", page 12

Location of Connectors, Ports, LEDs

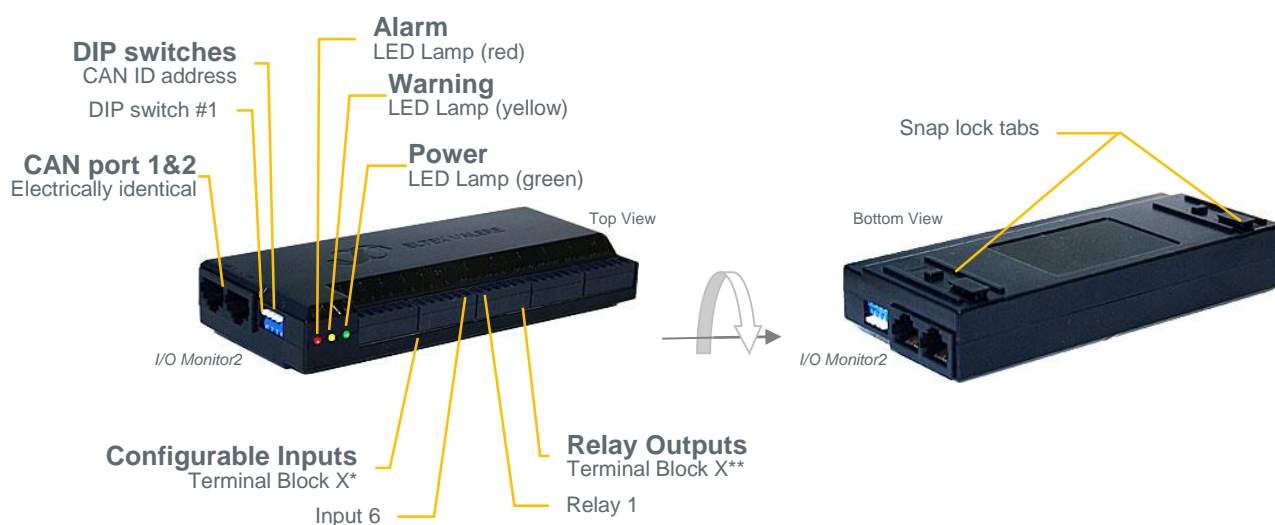


Figure 2 Location of terminals, DIP switches, CAN ports and LED indicators in the I/O Monitor2.
(The output and input terminals may be black or green)

CAN port 1 and 2 are electrically identical, and are used to enable connection of the CAN bus incoming and outgoing CAT5 cables, or the RJ45 CAN bus termination plug.

Refer to chapter “Connection Drawing”, page 9, for a complete list of signals, pin-out, etc.

| LED Indicator | Illumination Status | Description |
|---------------|--------------------------|------------------------------|
| Power | OFF | The monitor has NO supply |
| | ON green | The monitor has supply |
| Warning | OFF | No Warning |
| | ON yellow | Warning (Non-critical alarm) |
| Alarm | OFF | No Alarm |
| | ON red | Alarm (Critical Alarm) |
| Other | Green ON & Red Flashing | Supply voltage too low |
| | Green OFF & Red Flashing | Firmware boot-loading |

Table 1 Description of the I/O Monitor2's LED illumination status

Fastening / Unfastening the I/O Monitor2

You fasten the *I/O Monitor2 CAN Bus Node* inside the DC power cabinet or subassembly, snapping the node's snap-lock tabs (underneath the box, see "Figure 2", page 7) to dedicated slots inside the cabinet or subassembly, see "Figure 3", page 8.

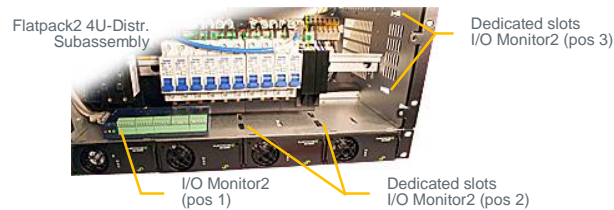
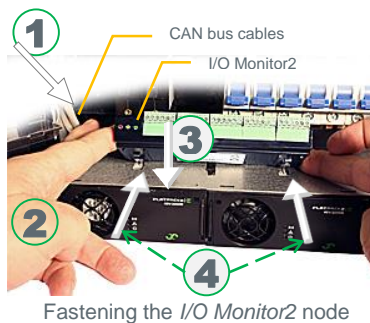
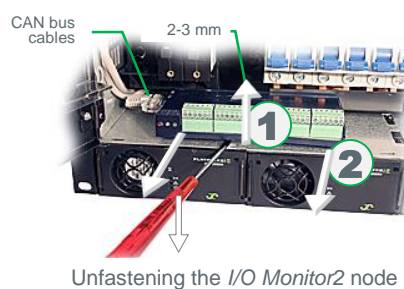


Figure 3 Location of dedicated slots for mounting I/O Monitor2 nodes in a Flatpack2 4U-Distribution subassembly

The nodes may also be mounted anywhere in the cabinet using standard Velcro hook-and-loop fasteners.



Fastening the I/O Monitor2 node



Unfastening the I/O Monitor2 node

To fasten the *I/O Monitor2* box using the snap-lock tabs:

- A. Plug the CAN bus cables (1)
- B. Align the box's snap-lock tabs (2) with the dedicated slots on the bottom of the distribution compartment
- C. Lower the box's front (3) so that the snap-lock tabs engage with the dedicated slots, and slide the box inwards (4) along the dedicated slots until the tabs snap in place

To unfasten the *I/O Monitor2* box from the power system:

- A. Lift slightly, 2-3 mm, the front of the box (1) (use a flat screw driver or your fingers)
- B. While lifted, pull the box outwards (2), so that it slides free from the dedicated slots

Figure 4 Fastening and unfastening I/O Monitor2 nodes in a Flatpack2 4U-Distribution subassembly

Connection Drawing

Use this drawing as a connection reference for all cabling. You find the exact location of connection terminals, plugs and DIP switches, by referring to chapter “Location of Connectors, Ports, LEDs”, page 7.

The figure shows the position of the relay contacts (NC, NO) when the relay coils are de-energized (alarm mode).

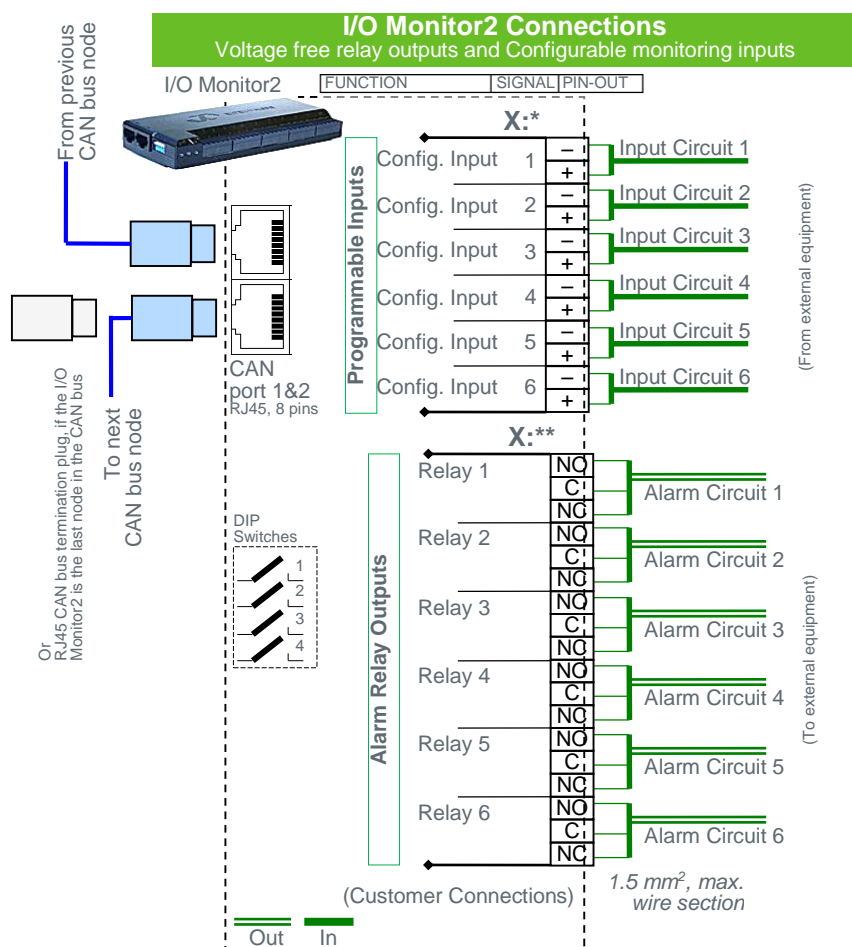


Figure 5 Connection Drawing I/O Monitor2 CAN Bus node

Read also chapter “Technical Specifications”, page 13, for more details.

CAN Bus Termination

To ensure a correct bus communication and avoid data reflection, you must always terminate the CAN bus with two 120Ω resistors, one at each end of the line (60Ω bus impedance).

Eltek Valere power systems are shipped from factory with the CAN bus already terminated with 120Ω resistors. The **CAN bus termination** is implemented with a special RJ45 plug with built-in 120Ω end-of-line resistor.

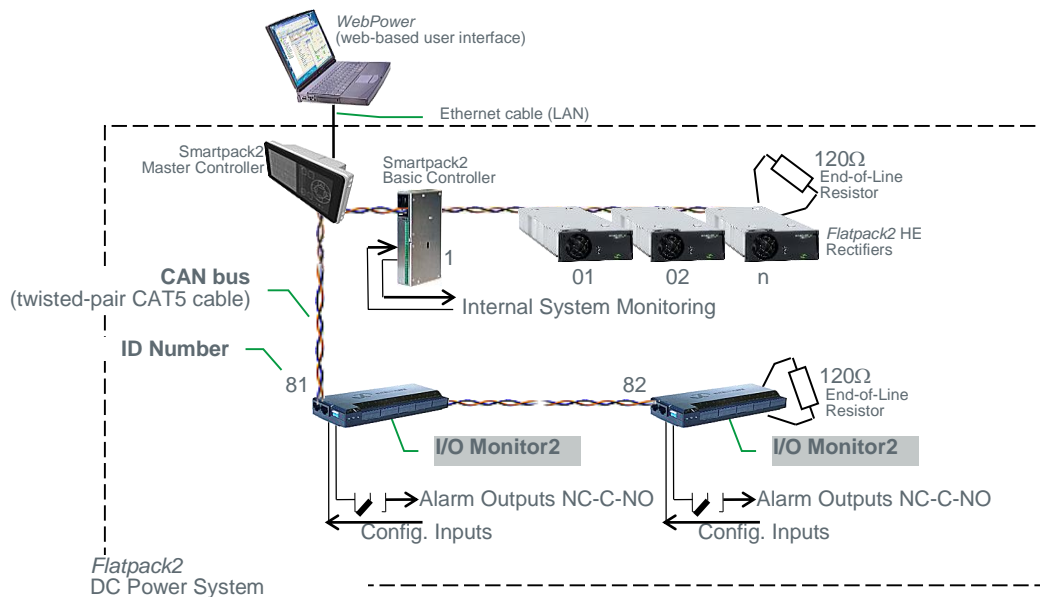


Figure 6 Example of CAN bus addressing and termination in a *Flatpack2* system with two “*I/O Monitor2* nodes” connected the CAN bus

When connecting *I/O Monitor2* nodes (max. 14 nodes of any type) to the CAN bus, you have to remove the CAN bus termination plug from one of the CAN bus ends — e.g. from the controller’s CAN port — and plug it in one of the CAN ports on the last connected *I/O Monitor2* node.

Configuration

When connecting *I/O Monitor2* nodes to the power system's CAN bus, you have to configure each of the *I/O Monitor2* nodes by:

1. **Setting the DIP switches** with the correct CAN bus address, to assign a unique ID number to the *I/O Monitor2*, read chapter "CAN Bus Addressing", on page 11
2. **Configuring the *I/O Monitor2* node's operation**, using the controller's keypad or *WebPower* in your standard web browser or the *PowerSuite* application, read chapter "Configuration in PowerSuite", page 12

CAN Bus Addressing

The power system controller dynamically software-assigns ID numbers to rectifiers. The controller registers the rectifiers' ID numbers — or CAN bus address (01, 02...) — together with their Serial Numbers (software assignment).

Other control units make use of DIP switches for configuring their unique CAN bus ID number (hardware assignment). The ID numbers (81, 82...94), for *I/O Monitors* (of any type T1, T2, T3), are assigned by DIP switches on the nodes' side.

A maximum of 14 *I/O Monitor* nodes (of any type T1, T2, T3) may be connected to the CAN bus.

| I/O Monitor | ID # | DIP Switch Position | | | |
|--------------------------|------|---------------------|-----|-----|-----|
| | | 1 | 2 | 3 | 4 |
| 1 st Monitor | 81 | OFF | OFF | OFF | OFF |
| 2 nd Monitor | 82 | ON | OFF | OFF | OFF |
| 3 rd Monitor | 83 | OFF | ON | OFF | OFF |
| 4 th Monitor | 84 | ON | ON | OFF | OFF |
| 5 th Monitor | 85 | OFF | OFF | ON | OFF |
| 6 th Monitor | 86 | ON | OFF | ON | OFF |
| 7 th Monitor | 87 | OFF | ON | ON | OFF |
| 8 th Monitor | 88 | ON | ON | ON | OFF |
| 9 th Monitor | 89 | OFF | OFF | OFF | ON |
| 10 th Monitor | 90 | ON | OFF | OFF | ON |
| 11 th Monitor | 91 | OFF | ON | OFF | ON |
| 12 th Monitor | 92 | ON | ON | OFF | ON |
| 13 th Monitor | 93 | OFF | OFF | ON | ON |
| 14 th Monitor | 94 | ON | OFF | ON | ON |

I/O Monitor2
DIP switch configuration



ID <81>
(All switches OFF)

Note:

- The monitor's ID # corresponds to the DIP switch's binary value plus 81

Table 2 *I/O Monitor2* DIP switch addressing

Configuration in PowerSuite

To activate and configure the *I/O Monitor2* specific settings, use the controller's keypad or other GUI as *WebPower* or *PowerSuite*. For example, using the *PowerSuite* PC application, version 2.3 or higher, you connect to the power system's controller, either via an Ethernet connection or via USB port, if accessible.

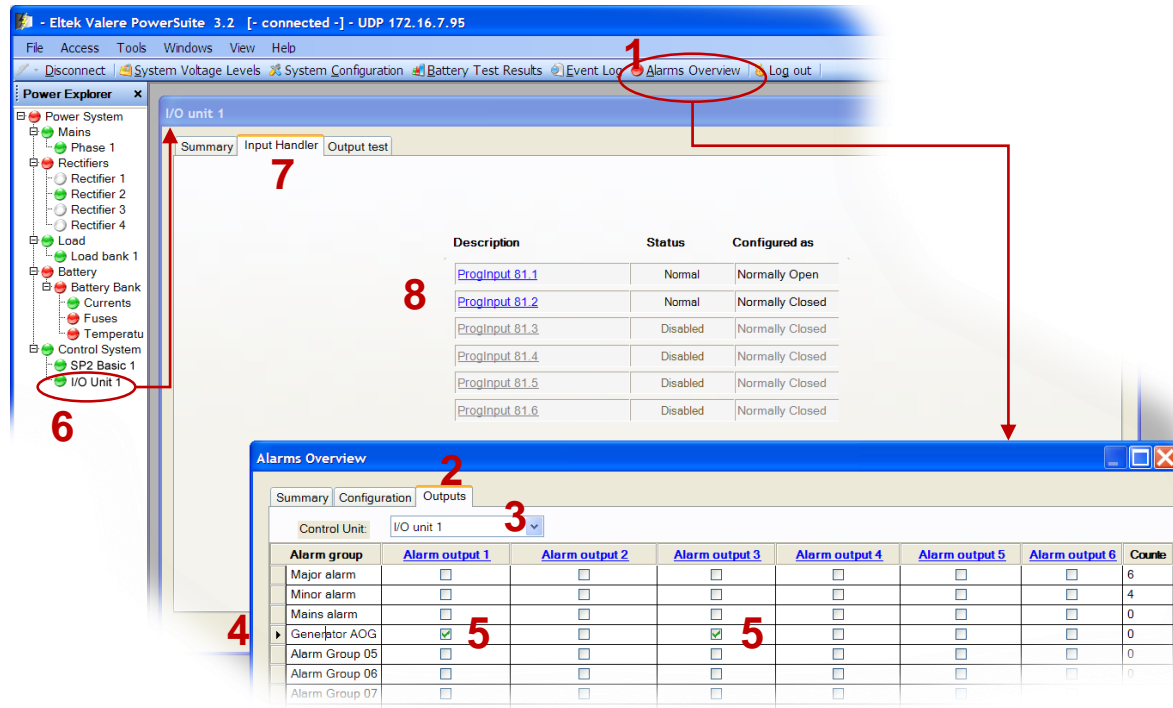


Figure 7 Example of I/O Monitor2 configuration via PowerSuite

In general, the connected *I/O Monitor2* node(s) are displayed in the *PowerSuite*'s *Power Explorer* pane (6), under the *Control System* node.

For configuring the *I/O Monitor2* outputs:

- Click on the "Alarms Overview" icon on the toolbar (1), then on the dialog box's "Outputs" tab (2)
- Display the *I/O Monitor2*'s alarm relays by selecting the actual "I/O Unit X" in the Control Unit's drop down list (3)
- If required, click and define an "Alarm Group", e.g. "Generator AOG" (4)
- Check the "Alarm Output X" relays (5) to assign to the Alarm Output Group, e.g. Alarm Output 1 and 3

For configuring the *I/O Monitor2* inputs:

- Open the *I/O Monitor2*'s icon under the *Control System* node (6)
- Click on the "Input Handler" tab (7)
- Click on the "ProgInput XX.Y" alarm monitor links (8)
(enable the input, change the description, select the input activation type, the event or system internal action, the alarm output group or relays to activate, etc.)

For more detailed description of how to configure the CAN Bus nodes, read the *PowerSuite* application's **Online Help**.

4. Technical Specifications

| I/O Monitors: ¹ -Outdoor / ² -Type 2 / ³ -Type 3 | |
|---|---|
| 6 configurable inputs: “digital”, voltage/current measurement | |
| o NO/NC, Pull Up/Dn, Diode Matrix Voltage range 0-75V (78mV res) | ⇒ No1-6 ^(1,2) , No1-2 ⁽³⁾ |
| o NO/NC, Voltage range 0-10V (13mV resolution) | ⇒ No3-6 ⁽³⁾ |
| o Current measurement 4-20mA (27µA resolution) | ⇒ No5-6 ⁽³⁾ |
| 6 configurable relay outputs: normally activated/deactivated | |
| o Dry/Form C, Max 1A/60W/75V | ⇒ No1-4 ^(1,3) , No1-6 ⁽²⁾ |
| o Dry/Form C, Max 8A/300W/75V | ⇒ No5-6 ^(1,3) |
| Outdoor cabinet specific ports: temp, fan control/monitoring | |
| o 2xTemp sensor inputs (-40-100°C with 0.14°C res.) ^(1,3) | |
| o 2xFan speed inputs (0-5V or pulse sense 1-10 p/r) ^(1,3) | |
| o 2xFan speed control outputs (0-10V, max -10/+20mA) ^(1,3) | |
| Max. CAN Power consumption | Max 3.4W ^(1,2,3) |
| SW Part number | 402088.009 ^(1,2,3) |
| Functionality | Data logging (non-volatile memory) |
| | o 10000 time stamped logs |
| | o 4 user selectable data points |
| | o Default: 2x Temp. 2x Fan Speed |

| All CAN Nodes | | | |
|-------------------|---|--------------|----------------------------|
| Max. nodes | 14 units of same type can be added a single CAN bus (Also see CAN Power) | | |
| Mounting | Slotted groove for post mounting or DIN rail/Velcro (for Battery Monitor) | | |
| Visual Indication | 3xLED (1xLED CAN Power) o GREEN: Power o YELLOW: Warning o RED: Alarm (Flashing LED: insufficient power) | | |
| SW Upload tools | Smartpack2 Master through CAN or FWLoader v3.25 or newer and IXXAT USB-to-CAN Converter (p/n: 208565) | | |
| Casing material | Plastic - V0 rated / Steel (CAN Power) | | |
| Operating temp | -40 to 70°C (-40 to 158°F) | Storage temp | -40 to 85°C (-40 to 185°F) |

| Applicable Standards | |
|----------------------|--|
| Electrical safety | IEC 60950-1 UL 60950-1 CSA C22.2 |
| EMC | IEC 61000-6-1 IEC 61000-6-2 IEC 61000-6-3 /A1 IEC 61000-6-4 ETSI EN 300 386 v1.3.3 FCC Part 15B Subpart 109 |
| Environment | 2002/95/EC (RoHS) & 2002/96/EC (WEEE) ETS 300 019-2-1 Class 1.2 ETS 300 019-2-2 Class 2.3 ETS 300 019-2-3 Class 3.2 |

Specifications are subject to change without notice
242100.CAN.DS3 – v3 (part)

Notice:

Specifications marked in grey, italic text does not apply to I/O Monitor2.

Part Numbers

| Part no. | Description |
|------------|---|
| 242100.304 | I/O Monitor <i>Type 1 (T1) Outdoor Applications</i> |
| 242500.502 | I/O Monitor2 Type 2 (T2) Generic Applications |
| 242100.306 | I/O Monitor3 <i>Type 3 (T3) Outdoor and Solar Hybrid Applications</i> |

