

# User's Guide

## Compact Controllers



## Monitoring and Control Units

Micropack DC Power Supply Systems

Information in this document is subject to change without notice and does not represent a commitment on the part of *Eltek Valere*.

No part of this document may be reproduced or transmitted in any form or by any means — electronic or mechanical, including photocopying and recording — for any purpose without the explicit written permission of *Eltek Valere*.

Copyright ©: *Eltek Valere*, 2009



## Safety Precautions

- ☑ The equipment described in this manual must only be operated by Eltek Valere personnel or by persons who have attended a suitable Eltek Valere training course
- ☑ The equipment represents an energy hazard and failure to observe this could cause terminal injury and invalidate our warranty
- ☑ There are hazardous voltages inside the power system. As the modules incorporate large charged capacitors, it is dangerous to work inside the system even if the mains supply is disconnected
- ☑ Products into which our components are incorporated have to comply with a number of requirements. Installation is to be in accordance with the recommendations herein
- ☑ Please read the manual carefully before using the equipment

**350011.013 Issue 1.0, 2009 February**

Published 2009-02-25 (draft 3)

Mfm

# Table of Contents

<b>1. Introduction</b>	<b>4</b>
About this Guide .....	4
System Diagram — Micropack Power System .....	4
<b>2. The <i>Compack</i> Controller</b>	<b>5</b>
Key Features .....	5
Block Diagram .....	5
Location of Terminals, Ethernet Port and LEDs .....	6
LED indicators .....	6
Mounting and Removing the Controller .....	7
Technical Specifications – Controllers .....	8
Firmware Upgrade of the <i>Compack</i> Controller .....	9
<b>3. Networking the <i>Compack</i> Controller</b>	<b>10</b>
Compack Controller's Default Networking Data .....	10
Controller Access — Via Ethernet LAN .....	10
Requirements .....	10
In Short .....	11
More Detailed .....	11
Controller Access — Via Stand-alone PC .....	13
Requirements .....	13
In Short .....	14
More Detailed .....	14
How Tos .....	18
How To Enable Pop-ups in the browser — Internet Explorer .....	18
How To Change Default Log In Passwords — Compack GUI .....	19
How To Change the Compack Controller's Device Name .....	21
How To Check the Status of your LAN Network Card (NIC) .....	22
<b>4. Configuring &amp; Monitoring the Power System</b>	<b>24</b>
Configuration — via Web Browser .....	25
Configuration — via PowerSuite Application .....	25
In Short .....	26
More Detailed .....	26
Monitoring — via Network Management System .....	29
Requirements .....	29
In Short .....	29
More Detailed — Controller SNMP Configuration .....	30
About Eltek Valere's SNMP MIB Files .....	33
Example — NMS Configuration .....	34
<b>5. Appendix</b>	<b>35</b>
About Control Units .....	35
CAN bus .....	35
CAN bus Addressing .....	35
Software Assignment — Rectifiers .....	35
Hardware Assignment — Control Units .....	35
<b>6. Glossary</b>	<b>38</b>

# 1. Introduction

The *Compack* controller is a powerful and cost-effective module, developed for monitoring and controlling *Eltek Valere's Micropack* DC power supply systems, which are DIN rail mounted and suitable in low power applications.

The controller is also used in larger *Eltek Valere's Compack*-based power systems.

## About this Guide

The booklet describes the *Compack* controller's building blocks, external connections and technical specifications. The booklet also provides the users of *Micropack* DC power systems with the required information for connecting the system to a network.

Read also the generic documentation for your *Micropack* DC power system.

For detailed functionality description, browse and search through the *Compack Online Help* and *PowerSuite Online Help* files.

For acronym descriptions, refer to chapter "Glossary", page 38 (rear cover page).

## System Diagram — Micropack Power System

In the *Micropack PS* system shown in Figure 1, the *Compack* controller monitors and controls the whole system. Via the Ethernet port, the controller facilitates system configuration using a Web browser locally or remotely via Internet.

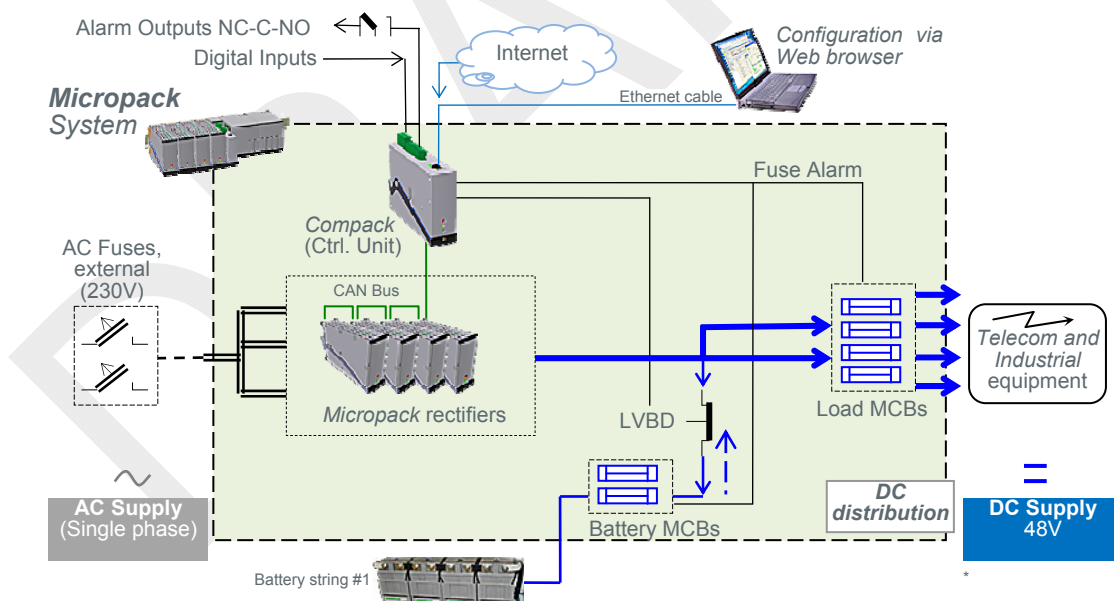


Figure 1 Example of a typical Micropack PS system used as a DC power supply for telecom and industrial equipment. The system is fed from an external AC mains supply, and consists of rectifiers, a control unit and DC distribution unit with LVBD contactor, all mounted on a DIN rail. External battery bank can be connected.

## 2. The Compack Controller

The *Compack* controller is a DIN rail mounted monitoring and control unit used in the *Eltek Valere's Micropack* DC power systems. The controller is also used in larger *Eltek Valere's Compack*-based power systems.

It monitors and controls the whole system, and implements several network protocols for local and remote system configuration via Web browser and existing network management system (NMS).

Using the UDP tunneling protocol, the powerful *PowerSuite* application may also be used for system configuration from a local or remote Internet connected personal computer.

See also chapter "Technical Specifications", on page 8.

For acronym descriptions, refer to chapter "Glossary", page 38 (rear cover page).

### Key Features

- ✓ LEDs for local visual alarming (Major, Minor, Power ON)
- ✓ Ethernet for or remote/local monitoring and control via Web browser
- ✓ SNMP protocol with TRAP, SET and GET on Ethernet. Email of TRAP alarms
- ✓ 3 programmable relay outputs for "traditional" remote monitoring
- ✓ 3 programmable multipurpose inputs (temperature, "digital inputs" or analog signals)
- ✓ Comprehensive logging
- ✓ Automatic battery monitoring and test
- ✓ Battery lifetime indication
- ✓ Battery used and remaining capacity (Ah or %) monitoring
- ✓ User defined alarm grouping (Boolean logic for grouped alarms)
- ✓ Uploading and downloading of configuration files with *PowerSuite* (Windows™ application) or Web browser



### Block Diagram

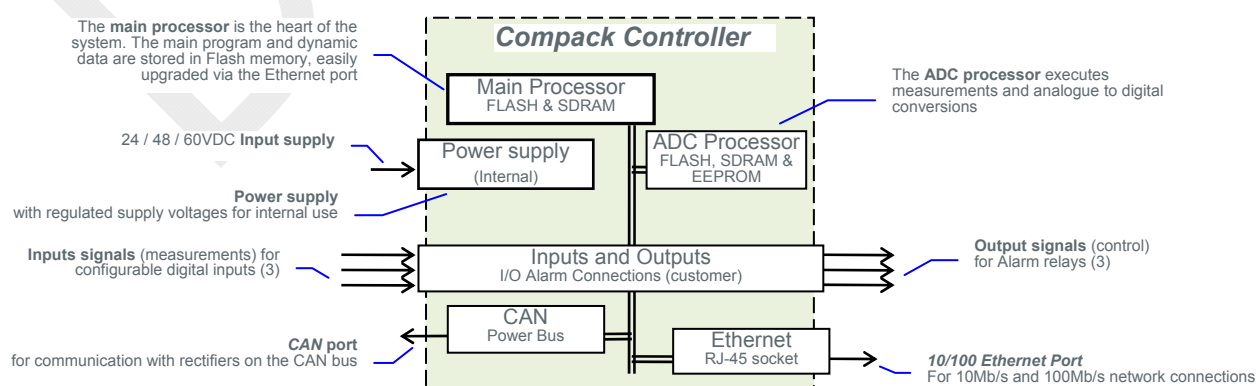


Figure 2 Block diagram of the Compack controller showing the module's main functions

## Location of Terminals, Ethernet Port and LEDs

You can easily connect the *Compack* controller to an Ethernet networked computer, plugging a standard Ethernet cable to the RJ-45 socket on top of the controller and to any available Ethernet socket on the network.

For acronym descriptions, refer to chapter "Glossary", page 38 (rear cover page).

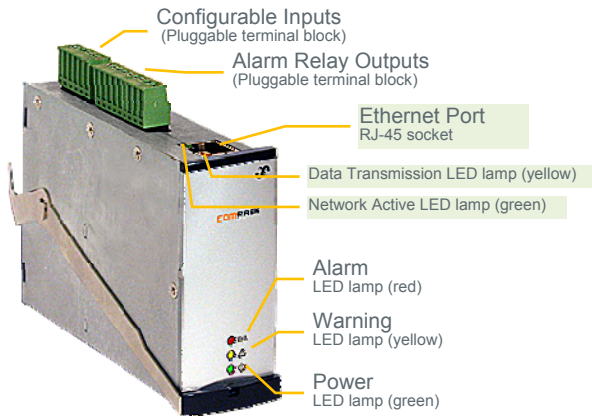


Figure 3 Location of I/O terminals, Ethernet port and LED lamps.

The *Compack* controller can also be connected directly to a computer, using an Ethernet crossover cable, or via a mini hub, then using standard Ethernet cables (straight-through cables).

For Ethernet network addressing, read also chapter "Networking the Compack Controller", page 10.

The *Compack* controller is configured from factory with ID number "1" for CAN bus communication. Read chapter "About Control Units", page 35.

The *Compack* controller's I/O cables are connected to pluggable terminal blocks located on the controller's top. These connections are used for monitoring and controlling the status of external equipment, using configurable inputs and voltage-free alarm relays contacts.

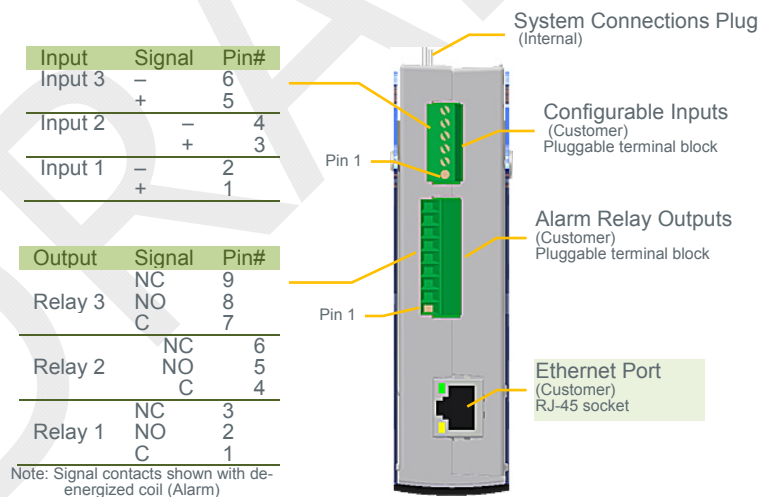


Figure 4 Pluggable terminal block connections on a Compack controller

### LED indicators

The *Compack* controller has the following LED indications:

- Alarm (red) indicates an alarm situation (major alarm)
- Warning (yellow) indicates an abnormal situation (minor alarm)
- "Power" (green) indicates that the power supply is ON or OFF



# Mounting and Removing the Controller

Get acquainted with the safety precautions on page 2, before installing or handling the equipment.



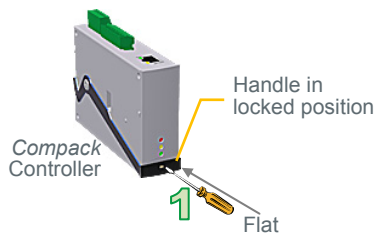
**CAUTION:** Do not hand-carry the controller by the handle. **Open the handle before plugging** the controller into the system.

Mount **blind panels** in unused module locations.

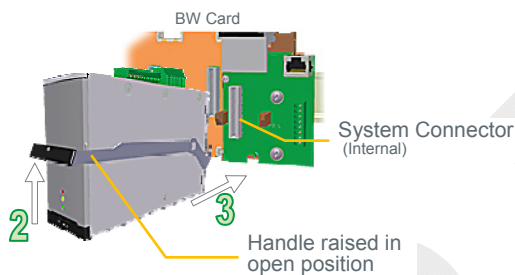


The *Compack* controller incorporates a handle that serves to lock the module into position in the *Micropack* PS System.

## Mounting the *Compack* controller



1. **Open the handle** by inserting a screwdriver into the hole to release the spring mechanism
2. **Raise the handle** carefully until it reaches the stop-knobs on the sides (open position)
3. **Plug the module** fully into the system connector, mounted on the Battery Distribution Base or the Bulk Feed Output Base
4. **Lock the handle** by pushing the handle downwards (locked position), so that the module is securely locked



## Removing the *Compack* controller

1. **Open the handle** by inserting a screwdriver into the hole to release the spring mechanism
2. **Raise the handle** carefully until it reaches the stop-knobs on the sides (open position)
3. **Pull the module** loose from the system connector. Do not pull from the handle!
4. **Lock the handle** by pushing the handle downwards (locked position)

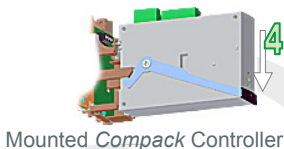


Figure 5 *Compack* controller's locking mechanism

# Technical Specifications – Controllers

Specifications	
Input Voltage	Tolerances: 17-75 VDC Shutdown: < 15 VDC
Temperature Range	Nominal: -20 to +60°C (-4 to 140°F) Reduced accuracy: -40 to +75°C
Power Consumption	3W
MTBF	> 550,000 hours Telcordia SR-332 Issue I, method III (a) (T <sub>ambient</sub> : 25°C)
Dimensions (HxWxD)	70 x 30 x 110mm / 2.7 x 1.2 x 4.33"
Weight	240g / 0.53 lbs
Ethernet port	10/100 BASE-T
Relay Outputs (1.5 mm <sup>2</sup> )	Form-C (dry contact NO-C-NC) 60V / 1A breaking capacity
Configurable Inputs (1.5 mm <sup>2</sup> )	"Digital": open/closed Analogue: 0-75V Temperature: External NTC

## Remote Monitoring and Control

- ✓ **PC running PowerSuite**  
Through a Windows™ based communication program installed on a remote computer the system can be monitored and controlled via Ethernet network (UDP "Tunnelling")
- ✓ **PC running a WEB Browser**  
Detailed web pages for monitoring, configuration, diagnostics and log access
- ✓ **NMS/OSS Platform via SNMP**  
MIB file supplied for Network Management System (NMS) monitoring through Ethernet on SNMP v2c
- ✓ **Software upgrades / Network setup**  
Via Ethernet port with EV Network Utilities application. DHCP assigned IP address is default enabled
- ✓ **E-mail**  
All TRAPS can also be sent as emails to two user specific email addresses

## Data Logging

- ✓ **Event log**  
Up to 10 000 events stored
- ✓ **Data log**  
7 user selectable analogue or calculated time stamped values can be logged with configurable interval (normal and critical interval) up to 10 000 times
- ✓ **Energy log**  
52 times back energy Wh (kWh) stored on hourly, daily and weekly basis. Rectifier or Solar Charger supplied and Load consumed
- ✓ **Battery temperature log**  
Battery life time indication based on recorded temperature in 10 temperature ranges with multiplying factor for reduced lifetime
- ✓ **Battery test log**  
Last 10 battery test results with test type, test duration [min], average discharge current [A], discharged capacity [Ah], test result quality [%] and detailed discharge curves with minute by minute current and voltage

## Control Features

### Control System

- Output Voltage Measurement
- Load Current Calculation
- Energy Calculation
- Load/Battery Disconnect
- Real Time Clock with Battery Backup
- Stored Site Text/ID and Messages
- Position (long/lat) for auto placement
- Generator start/stop control setup
- Test of Relay Outputs
- Alarm grouping of events for relay outputs
- Boolean AND of alarm groups

### Battery

- Battery Current Measurement
- Battery Temperature Measurement
- Battery Testing (acc. to discharge table or set time limit)
- Setup of Battery Data/Table
- Battery Capacity Indication
- Battery Boost Charging
- Auto – Ah discharge or voltage threshold
- Interval or Manual
- Temperature Compensated Charging
- Charge Current Limitation
- Battery Low Voltage Disconnect
- Temperature dependent (optional)
- Mains independent (optional)

### Rectifier

- Available information about each rectifier, e.g. serial number, version, internal temperature
- Individual Rectifier Current Measurement
- Individual Rectifier Input Voltage
- Efficiency Management
- Emergency Voltage
- Startup delay
- Detailed internal alarms summary

## Alarms / Events available

Alarms can be set up with monitoring of minor and major levels. Hysteresis and time delay is user configurable. All average and peak levels on analogue values are auto logged.

### Power & Control System

- AC Mains Low (2-level)
- AC Phase Voltage x3 (2-level)
- "Digital" Inputs (programmable descriptions)
- Events trigger by inputs  
Service mode (block relays), Generator running, Lower charge current limit, Battery test, Boost inhibit, Emergency low voltage, Clear manual reset alarms.

### Load

- Load Disconnect
  - Voltage or Timer (from mains failure) based
  - Mains independent (optional)
- Load Fuse
- Load Current

### Battery

- Battery Voltage (4-level, optional 8-level)
- Battery Temperature (2-level)
- Battery Used Capacity (2-level) [Ah or %]
- Battery Remaining Capacity (2-level) [Ah or %]
- Battery Fuse
- Symmetry Failure (2-level) – Only with BM Can Node
- Battery Quality after test (2-level)
- Battery Current (4-level)
- Battery Life Time (2-level) [from temperature log]

### Rectifier

- Rectifier Failure (2-level)
- Rectifier Capacity (2-level)
- Rectifier Current (2-level)
- Rectifier Avg. Temperature (2-level)
- Rectifier Current Share (2-level)

Specifications are subject to change without notice

242100.400.DS3- vA



## Firmware Upgrade of the *Compack* Controller

You can use the “*Eltek Valere Network Utility*” program<sup>[1]</sup> running on a PC to upgrade the *Compack* controller’s firmware.

Use this utility program, “*EVIPSetup.exe*”, to find your controller’s firmware version, or access the controller’s configuration pages in a Web browser.

Do following:

1. **Connect a PC to the *Compack***  
Read chapter “Networking the *Compack* Controller”, page 10
2. **Start the program “*EVIPSetup.exe*”,**  
on the computer;

On the “*Eltek Valere Network Utility*” program:

3. **Select the *Compack* controller**  
that you want to update; Check correct MAC address and IP address
4. **Click the “Update Software” button**
5. **Click the “Browse” button,**  
and select the firmware file (s19-format) in the computer
6. **Click the “Update” button**  
the utility will download and update the firmware to the *Compack* controller with the selected IP address

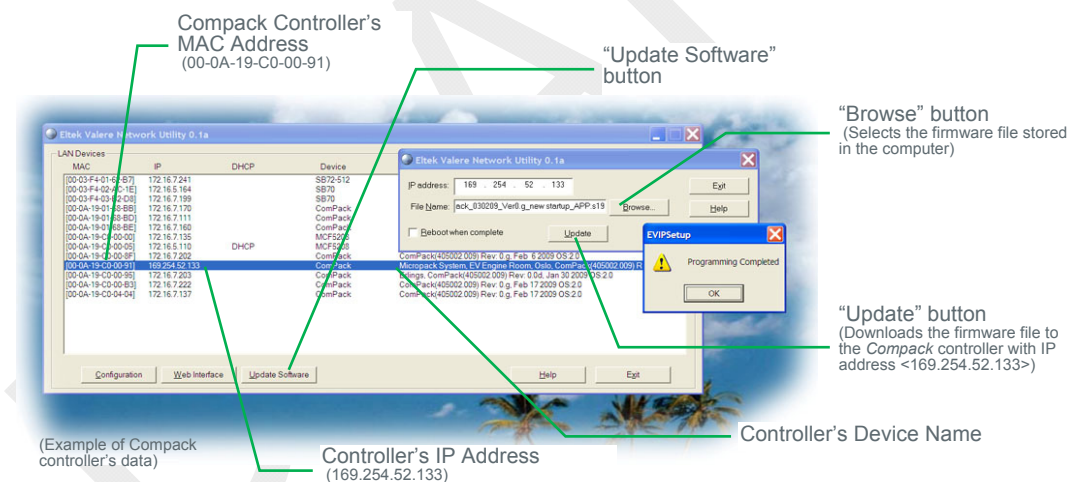


Figure 6 The “*Eltek Valere Network Utility*” program

While the firmware is downloaded to the *Compack* controller, the utility program displays a progress bar.

Once the firmware has loaded, the *Compack* controller will automatically restart.

<sup>[1]</sup> You can visit [www.eltekvalere.com](http://www.eltekvalere.com) to download the “*Eltek Valere Network Utility*” program, or contact Eltek Valere’s Service Dep.

## 3. Networking the Compack Controller

This chapter describes how to access the *Compack* controller from a computer, so that you can configure and operate the *Compack*-based DC power supply system.

After accessing the controller, you can read chapter "Configuring & Monitoring the Power System", page 24. For more detailed description of configuration options and other advanced networking services implemented by the controller, refer to the *Compack* Online Help file that you can download with the controller's firmware.

For acronym descriptions, refer to chapter "Glossary", page 38 (rear cover page).

You can access the *Compack* controller using a standard computer, which is either connected to an existing LAN or directly connected to the controller.



Figure 7 Controller's access via LAN and via a stand-alone computer

### Compack Controller's Default Networking Data

Each *Compack* controller is shipped with a unique Eltek Valere MAC address (Media Access Control) stored inside the controller and marked on the controller's label.

*Compack* controllers have by default the Dynamic Host Configuration Protocol (DHCP) enabled. Thus, the controller can automatically obtain necessary access data to operate in an existing Local Area Network (LAN), based on the Ethernet communication technique and the TCP/IP protocol suite.

Note that the controller is shipped without a fixed IP address (IPv4).

## Controller Access — Via Ethernet LAN

If you have access to a Local Area Network (LAN) — based on the Ethernet communication technique and the TCP/IP protocol suite — you can simply connect the *Compack* controller to the LAN, and get Web browser access to the controller from your networked computer.

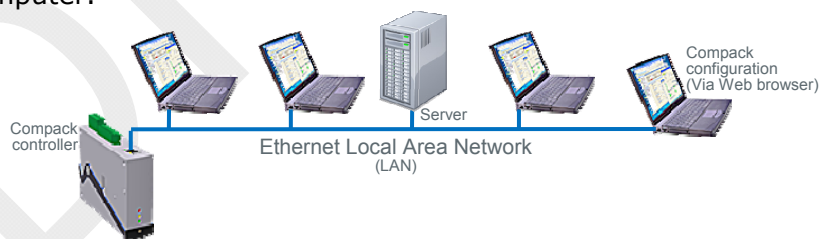


Figure 8 Controller's access from a computer connected a LAN

### Requirements

- Computer correctly configured and connected to the LAN
- Standard Ethernet cable (straight through cable),  
to connect the controller to the LAN
- "Eltek Valere Network Utility" program,  
that you can download with the controller's firmware from  
[www.eltekvalere.com](http://www.eltekvalere.com)

Contact your LAN administrator, if your computer has difficulties accessing the network.

## In Short

To get access to the *Compack* controller via your LAN networked computer, just connect the controller to the LAN, which will automatically assign an IP address to the controller. Using the "*Eltek Valere Network Utility*" program, identify the controller, access it via your Web browser and change the controller's LAN device name, to facilitate later identification.

The "Controller Access — Via Ethernet LAN" procedure involves following steps (as described in more detail in the next chapter):

1. Start the "Eltek Valere Network Utility" program
2. Connect the *Compack* controller to the LAN
3. Identify the controller in the "*Eltek Valere Network Utility*" program
4. Access the controller's configuration pages in your Web browser
5. Log in with the <admin> account
6. Change the controller's Device Name

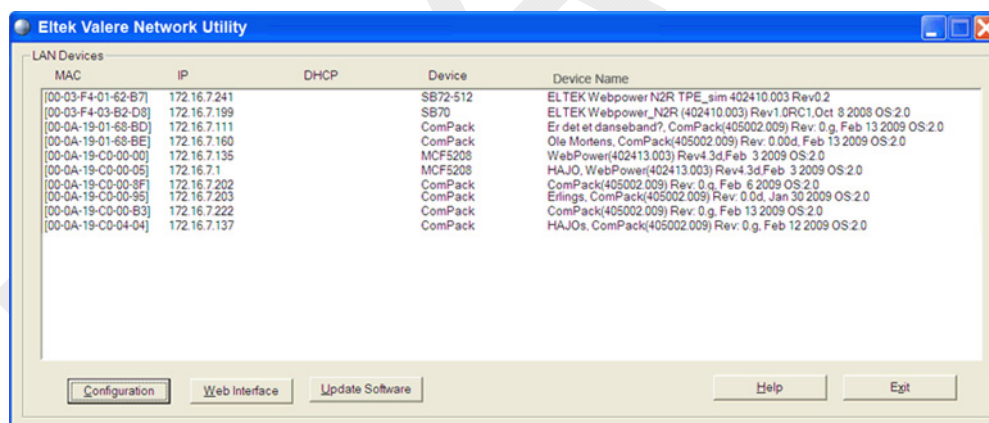
For acronym descriptions, refer to chapter "Glossary", page 38 (rear cover page).

Read also chapter "Compack Controller's Default Networking Data", page 10.

## More Detailed

Carry out the following steps to access the *Compack* controller via the Ethernet LAN:

1. **Start the "Eltek Valere Network Utility" program**  
by opening the file "EVIPSetup.exe", which will display already connected LAN devices. The *Compack* controller will be displayed after connection to the LAN.



(Example of connected LAN devices)

2. **Connect the *Compack* controller to the LAN**  
plugging one end of a standard Ethernet cable (straight through Ethernet cable) to the controller's RJ-45 socket on its top, and the other end to one of the LAN's available RJ-45 sockets. See "Figure 8", page 10.

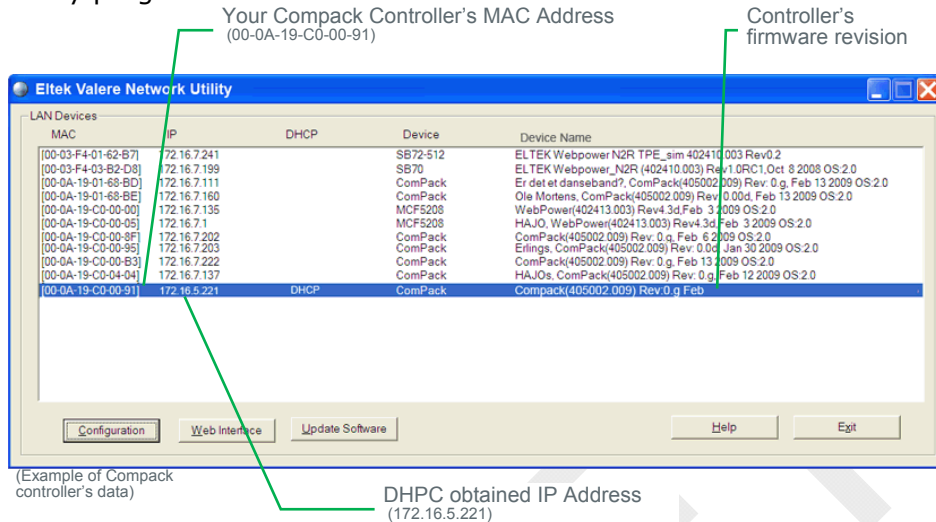
The controller automatically obtains an IP address from the LAN server, as the controller's DHCP protocol is enabled from factory.

### 3. Identify the controller in the "Eltek Valere Network Utility" program

by looking for your *Compact* controller's MAC address on the list of connected LAN devices.

All controllers are shipped with a label specifying its unique MAC address. Check that the displayed MAC address corresponds to the MAC address label on the controller

Note that it can take up to 1 minute before the connected controller is displayed in the utility program.



### 4. Access the controller's configuration pages in your Web browser

by marking the controller (blue marking line in the above example), and clicking on the Web Interface button.

or

by opening your Web browser (e.g. Internet Explorer) and entering the controller's IP address in the browser's address line.

(E.g. <172.16.5.221>; entering "http://" before the address is not necessary)

### 5. Log in with the <admin> account,

by clicking on the "Enter" link — in the Web browser, in the middle of the page — and entering <admin> as user name and <admin> as password.

Note that the Web browser must have the Pop-ups function enabled, as the configuration web pages employs Java script navigation.

Read chapter "How To Enable Pop-ups in the browser — Internet Explorer", page 18.

For security reasons, it is advisable to change the default passwords with your own passwords.

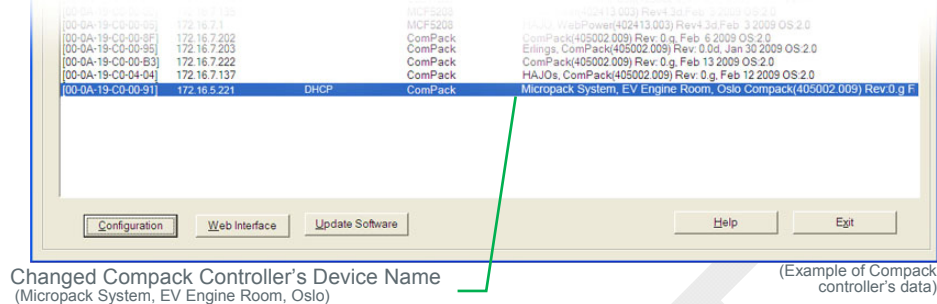
Read chapter "How To Change Default Log In Passwords", page 19.

## 6. Change the controller's Device Name by,

- Clicking on "Administration" button, in the Web browser's toolbar
- Clicking on the "TCP/IP" tab
- Then clicking in the Device Name field and entering the Device Name that describes your *Micropack* PS System, e.g. "Micropack System, EV Engine Room, Oslo"

Read chapter "How To Change the Compack Controller's Device Name", page 21.

Now the Eltek Valere Network Utility window will display the new device name.



## Controller Access — Via Stand-alone PC

If a Local Area Network (LAN) is not available, you can also access the *Compack* controller directly from a stand-alone computer.

For acronym descriptions, refer to chapter "Glossary", page 38 (rear cover page).



Figure 9 Controller's access from a stand-alone PC using a Ethernet crossover cable or using a standard mini HUB

### Requirements

- Computer equipped with a standard Ethernet Network Interface Card (NIC) with RJ-45 socket. Wireless NICs may not be used to access the controller.
- The NIC's necessary network components have to be correctly installed, specially the Internet Protocol (TCP/IP). Also, the DHCP function must be enabled.
- Ethernet cable (crossover cable), to connect the controller to the LAN

Network components are software clients, services and protocols that the NIC uses to communicate with servers in the network.

Contact your IT Department, if your computer has difficulties while installing or configuring the network card. Also, read chapter "How To Check the Status of your LAN Network Card (NIC)", page 22.

### In Short

To get access to the *Compack* controller via a stand-alone computer, just connect the controller directly to the computer's NIC using an Ethernet crossover cable (or using 2 standard Ethernet straight through cables and a standard mini HUB).

The controller and the computer will assign themselves a random IP address. E.g. the controller may get <0.0.0.1> and the computer <169.254.52.132>.

For the computer to be able to access the controller, both devices need to have different IP addresses, but in the same range. As the computer's NIC IP address is now e.g. <169.254.52.132>, so reconfiguring the controller's IP address from e.g. <0.0.0.1> to e.g. <169.254.52.133> will enable them to "talk" to each other.

Then, access the controller via your Web browser, and change its LAN device name, to facilitate later identification.

The "Controller Access — Via Stand-alone PC" procedure involves following steps (as described in more detail in the next chapter):

1. Start the "Eltek Valere Network Utility" program
2. Connect the computer *to the Compack* controller and check its MAC address
3. Find the NIC's IP address and subnet mask used by the computer
4. Change the controller's IP address to the same range as the computer's
5. Access the controller's configuration pages in your Web browser
6. Log in with the <admin> account,
7. Change the controller's Device Name

For acronym descriptions, refer to chapter "Glossary", page 38 (rear cover page).

Read also chapter "Compack Controller's Default Networking Data", page 10.

### More Detailed

Carry out the following steps to access the *Compack* controller via a stand-alone computer:

1. **Start the "Eltek Valere Network Utility" program**  
by opening the file "EVIPSetup.exe", which will not display any LAN devices, as the computer has now nothing connected to the NIC.

Notice that if the computer has installed wireless Ethernet Network Interface Cards, they should not be active; otherwise the Eltek Valere Network Utility may display LAN devices accessed wireless.

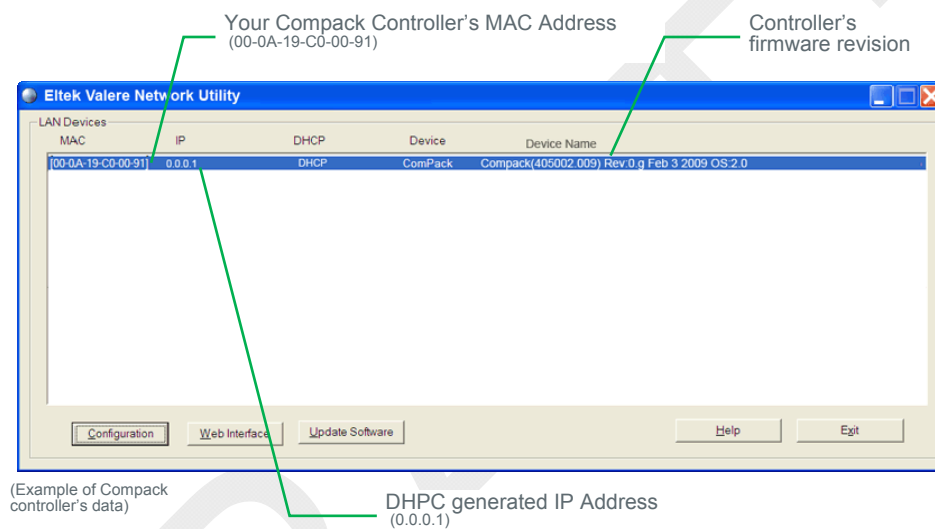


- 2. Connect the computer to the Compack controller and check its MAC address** plugging one end of the Ethernet crossover cable to the controller's RJ-45 socket on its top, and the other end to the computer's NIC.  
Or  
using 2 Ethernet standard straight through cables and a standard mini HUB.  
See "Figure 9", page 13.

The controller automatically generates an IP address, e.g. <0.0.0.1>, and the Eltek Valere Network Utility displays the controller as a connected LAN device (may take up to 1 minute to display).

Notice that the displayed IP address may differ from above, if a Static IP address has been previously enabled and stored in the controller.

Check that the displayed MAC address corresponds to the MAC address label on the controller.



- 3. Find the NIC's IP address and subnet mask used by the computer by,**
- Opening the computer's Network Connections window
  - Selecting the actual network card (NIC) and
  - Making a note of the IP address and Subnet mask displayed in the Details panel, on the left side of the window.
- E.g. IP address: <169.254.52.132>, Subnet mask: <255.255.0.0>

Read chapter "How To Check the Status of your LAN Network Card (NIC)", page 22.

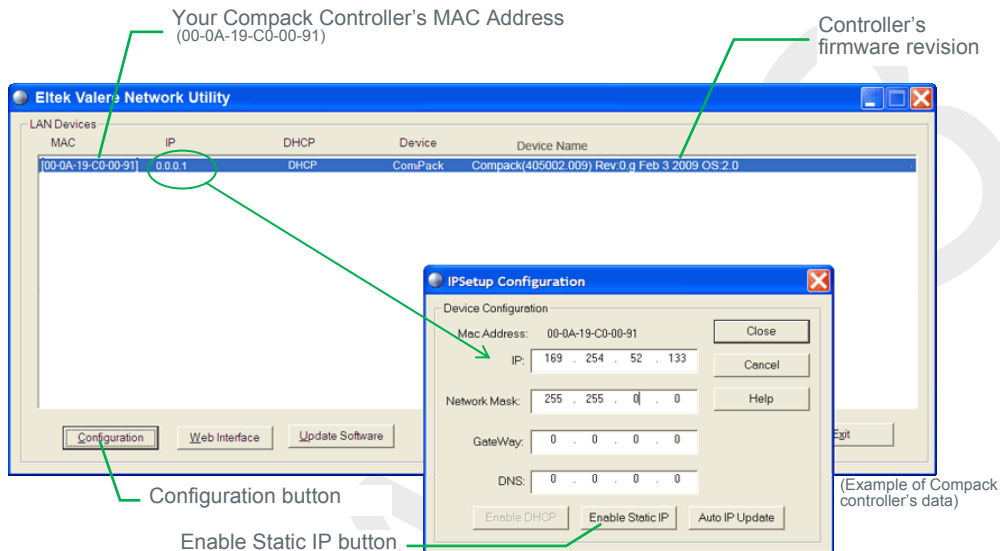
Notice that you can also get this information by opening a DOS window and running the command "IPCONFIG".

- 4. Change the controller's IP address to the same range as the computer's by,**
- Selecting the controller in the Eltek Valere Network Utility window
  - Clicking on the Configuration button, to open the "IPSetup Configuration" window
  - Changing the IP address from, e.g. <0.0.0.1> to e.g. <169.254.52.133>
  - Changing the Network Mask from, e.g. <0.0.0.0> to e.g. <255.255.0.0>
  - and clicking on the "Enable Static IP" button

Now the controller's and the computer's IP addresses and Subnet masks are in the same range and both devices can "talk" to each other.

Computer's: <169.254.52.132> <255.255.0.0>

Controller's: <169.254.52.133> <255.255.0.0>



- 5. Access the controller's configuration pages in your Web browser**  
by opening your Web browser (e.g. Internet Explorer) and entering the controller's new static IP address in the browser's address line.  
(E.g. <169.254.52.133>; entering "http://" before the address is not necessary)
- 6. Log in with the <admin> account,**  
by clicking on the "Enter" link — in the Web browser, in the middle of the page — and entering <admin> as user name and <admin> as password.

Note that the Web browser must have the Pop-ups function enabled, as the configuration web pages employs Java script navigation.

Read chapter "How To Enable Pop-ups in the browser — Internet Explorer", page 18.

For security reasons, it is advisable to change the default passwords with your own passwords.

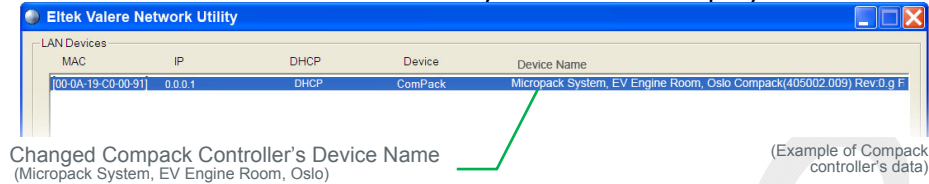
Read chapter "How To Change Default Log In Passwords", page 19.

## 7. Change the controller's Device Name by,

- Clicking on "Administration" button, in the Web browser's toolbar
- Clicking on the "TCP/IP" tab
- Then clicking in the Device Name field and entering the Device Name that describes your power system, e.g. "Micropack System, EV Engine Room, Oslo"

Read chapter "How To Change the Compack Controller's Device Name", page 21.

Now the Eltek Valere Network Utility window will display the new device name.



### TIPS:

If later you connect your computer's NIC (while DHCP is enabled) to a LAN, the network server will automatically assign a new IP address to your NIC, so that your computer may access the LAN.

It may take up 1 or 2 minutes, but you can select the command "Repair this connection" — in the computer's Network Connections window — and Windows will right away automatically assign the new IP address.

Read chapter "How To Check the Status of your LAN Network Card (NIC)", page 22.

## How Tos

This chapter describes the steps required to perform certain useful tasks, such as:

- How To Enable Pop-ups in the browser — Internet Explorer
- How To Change Default Log In Passwords — Compack GUI
- How To Change the Compack Controller's Device Name
- How To Check the Status of your LAN Network Card (NIC)

### How To Enable Pop-ups in the browser — Internet Explorer

You must allow the Web browser to show pop-ups from the *Compack* controller's configuration web pages, as the pages' navigation buttons, etc. employ Java script-based navigation.

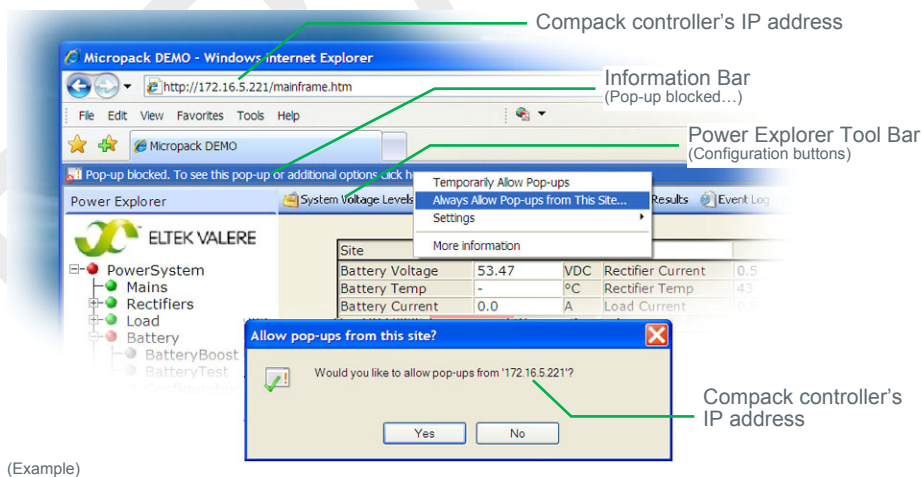
Internet Explorer and other Web browsers usually have the Pop-Up Blocker feature enabled, thus stopping annoying pop-up ads and pop-up windows while "surfing" the Internet.

For acronym descriptions, refer to chapter "Glossary", page 38 (rear cover page).

This chapter explains how to configure the Pop-up Blocker to allow pop-ups from the *Compack* controller's configuration web pages (e.g. IP address <172.16.5.221>), using Internet Explorer.

Carry out the following steps, if the browser's Information bar displays that the Pop-up Blocker has blocked the page, after clicking on one the buttons on the Power Explorer tool bar:

1. Click on the **Information bar**
2. Select command "**Always Allow Pop-ups from This Site**", from the drop-down menu
3. Click "**Yes**", in the "Allow pop-ups from this site?" dialog box



## How To Change Default Log In Passwords — Compack GUI

To view the *Compack* controller's configuration pages (GUI) in your Web browser, you have to log in using one of the following default, factory set accounts:

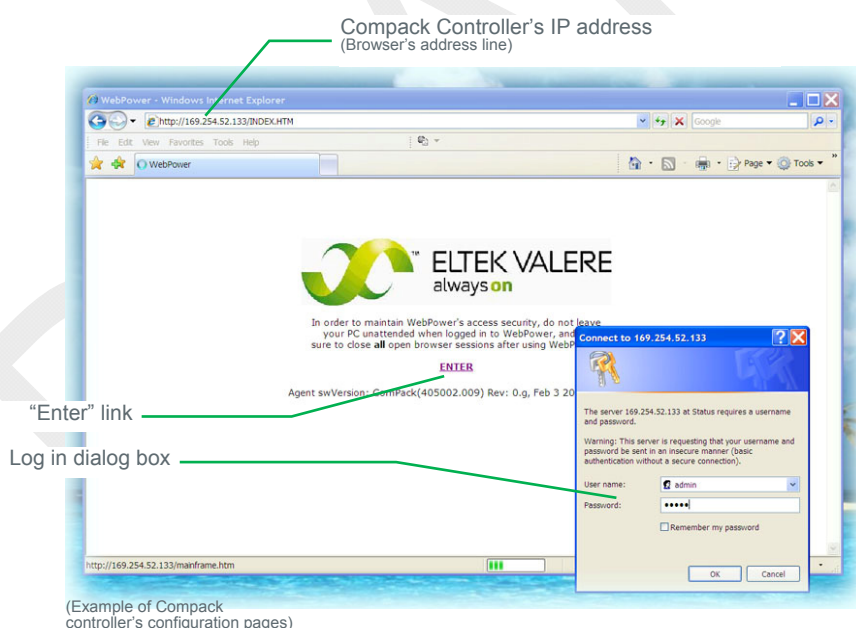
User Name	Password	Note
<b>status</b>	status	Read only access rights
<b>control</b>	control	Service access rights
<b>admin</b>	admin	Administration access rights

For security reasons, it is advisable to log in with the "admin" account and change the default passwords with the passwords of your choice.

For acronym descriptions, refer to chapter "Glossary", page 38 (rear cover page).

Carry out the following steps to change the passwords in the *Compack* controller's configuration pages in your Web browser:

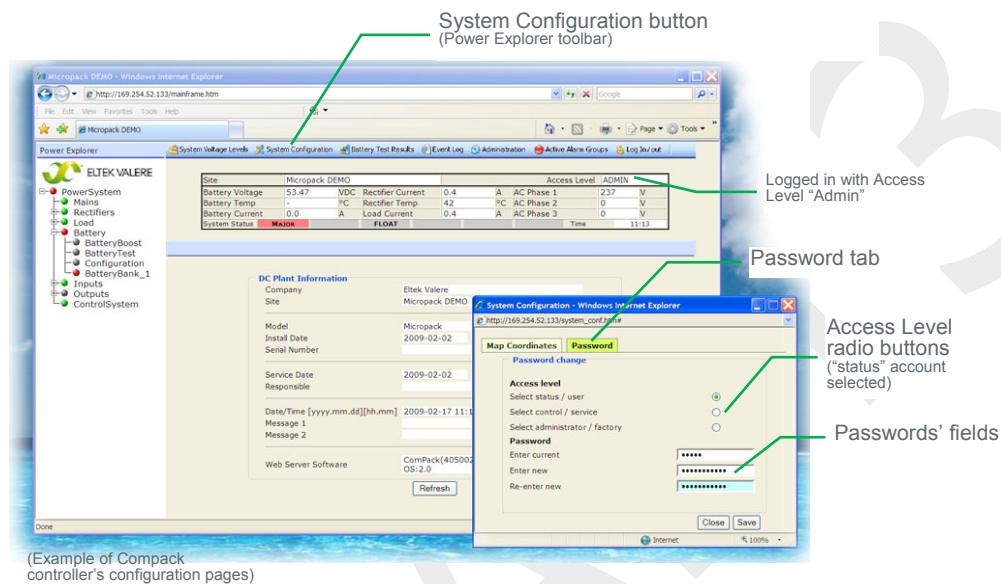
- 1. Access the controller's configuration pages in your Web browser**  
by opening your Web browser (e.g. Internet Explorer) and entering the controller's IP address in the browser's address line.  
(E.g. <169.254.52.133>; entering "http://" before the address is not necessary)
- 2. Log in with the <admin> account,**  
by clicking on the "Enter" link — in the Web browser, in the middle of the page — and entering <admin> as user name and <admin> as password.



Note that the Web browser must have the Pop-ups function enabled, as the configuration web pages employs Java script navigation.  
Read chapter "How To Enable Pop-ups in the browser — Internet Explorer", page 18.

### 3. Change the passwords by,

- Clicking on the "System Configuration" button, on the Power Explorer toolbar
- Clicking on the "Password" tab, in the dialog box
- Selecting the Access Level for the account's password you want to change; e.g. the "status" account
- Clicking in the Password fields, and typing the current password and twice the password you want to change to
- Then clicking on the "Save" button, to activate the new password





## How To Change the Compack Controller's Device Name

In order to facilitate identification of the *Compact*-based power system when connected a LAN, it is advisable to log in with the "admin" account and give the *Compact* controller a Device name of your choice.

For acronym descriptions, refer to chapter "Glossary", page 38 (rear cover page).

Carry out the following steps to give a Device name to the controller, using the *Compact* controller's configuration pages in your Web browser:

### 1. Access the controller's configuration pages in your Web browser

by opening your Web browser (e.g. Internet Explorer) and entering the controller's IP address in the browser's address line.  
(E.g. <169.254.52.133>; entering "http://" before the address is not necessary)

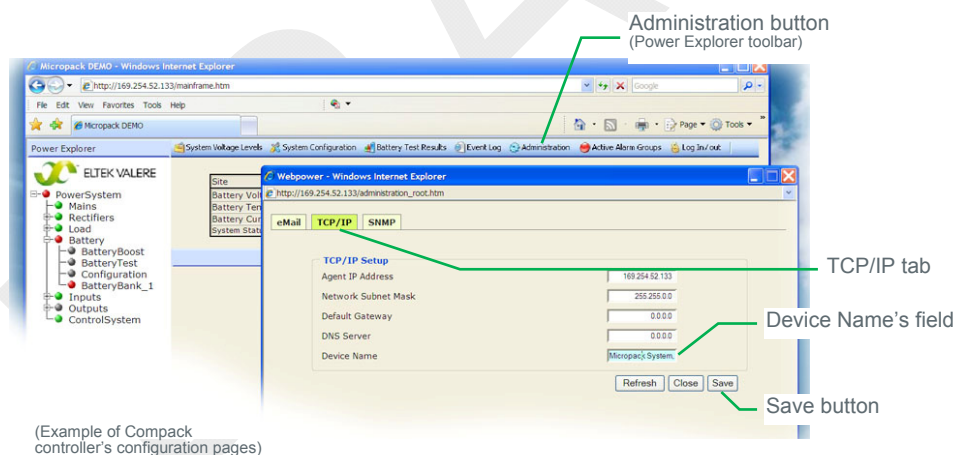
### 2. Log in with the <admin> account,

by clicking on the "Enter" link — in the Web browser, in the middle of the page — and entering <admin> as user name and <admin> as password (unless you have previously changed it).

Note that the Web browser must have the Pop-ups function enabled, as the configuration web pages employs Java script navigation.  
Read chapter "How To Enable Pop-ups in the browser — Internet Explorer", page 18.

### 3. Change the controller's Device Name by,

- Clicking on "Administration" button, in the Web browser's toolbar
- Clicking on the "TCP/IP" tab
- Clicking in the Device Name field and entering the Device Name that describes your power system, e.g. "Micropack System, EV Engine Room, Oslo"
- Then clicking on the "Save" button, to active the controller's new device name



Now the Eltek Valere Network Utility window will display the new device name.

## How To Check the Status of your LAN Network Card (NIC)

This chapter describes how to check your NIC's IP address, when the computer is running the MS Windows operating system.

You can always check the IP address, subnet mask, status, etc. of your personal computer's network card (NIC), by opening the "Network Connections" window and looking at the Detail pane on the left side of the window.

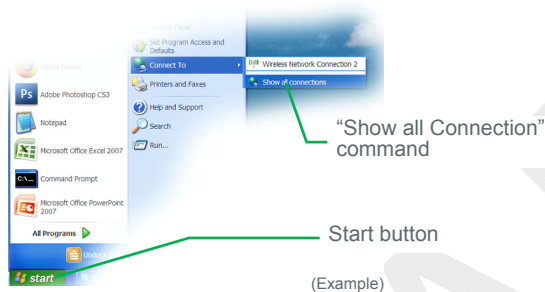
Notice that you can also get this information by opening a DOS window and running the command "IPCONFIG".

For acronym descriptions, refer to chapter "Glossary", page 38 (rear cover page).

Carry out the following steps:

**1. Open the "Network Connections" window by,**

- Clicking on the "Start" button, and
- Selecting the options: "Connect To" and "Show all Connections"



OR

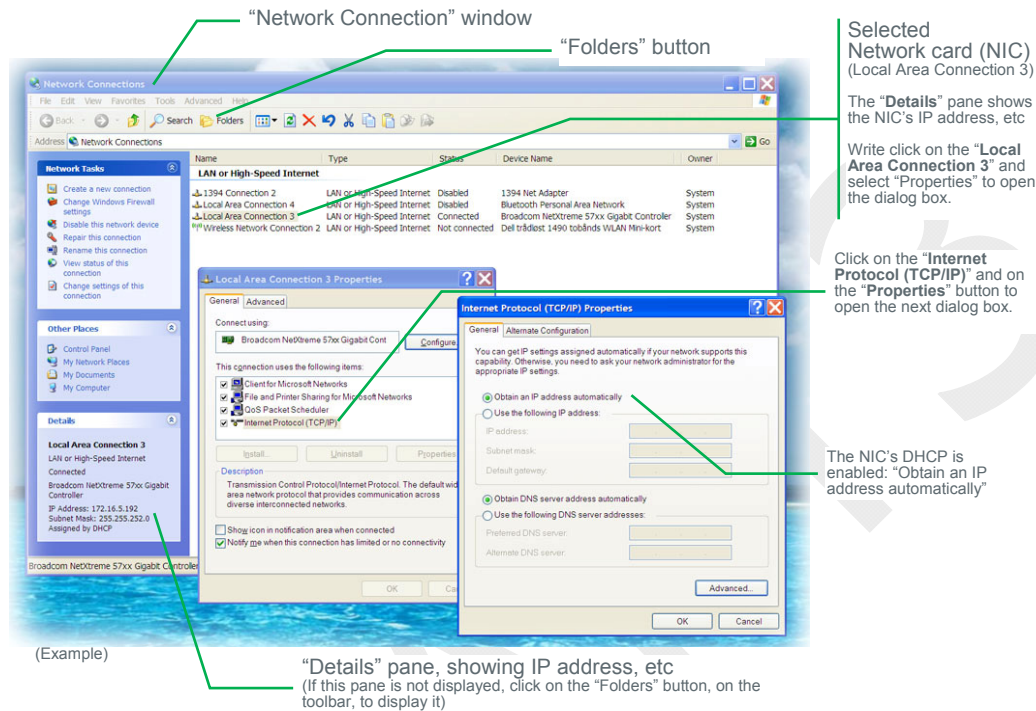
If this command is not displayed in the computer's "Start" menu,

- Clicking on the "Start" button, and
  - Selecting the "Control Panel"
  - Clicking on the "Network Connections" icon
- that opens the computer's Network Connections window

**2. Find the NIC's IP address and subnet mask used by the computer by,—**  
— Selecting the actual network card (NIC),  
e.g. "Local Area Connection 3"

— Making a note of the IP address and Subnet mask displayed in the Details panel, on the left side of the window.

E.g. IP address: <172.16.5.192>, Subnet mask: <255.255.252.0>



## 4. Configuring & Monitoring the Power System

This chapter describes the available methods to configure and monitor the *Compack*-based DC power supply system from a computer.

For more detailed description of configuration options and other advanced networking services implemented by the controller, refer to the *Compack* Online Help file that you can download with the controller's firmware.

Before configuring and monitoring the power system, the computer must be able to access the *Compack* controller, which is described in chapter "Networking the Compack Controller", on page 10.

For acronym descriptions, refer to chapter "Glossary", page 38 (rear cover page).

You can configure and monitor the *Compack*-based DC power supply system from a computer — connected to a LAN or directly connected to the controller — using the following methods:

- **Via a standard Web browser.**  
The configuration Web pages are stored in the controller, so you do not need to install any programs in the computer.
- **Via PowerSuite application.**  
The powerful *PowerSuite* application must be installed in the computer.
- **Via Network Management System (NMS)**  
The NMS hardware and software must be installed in the network.

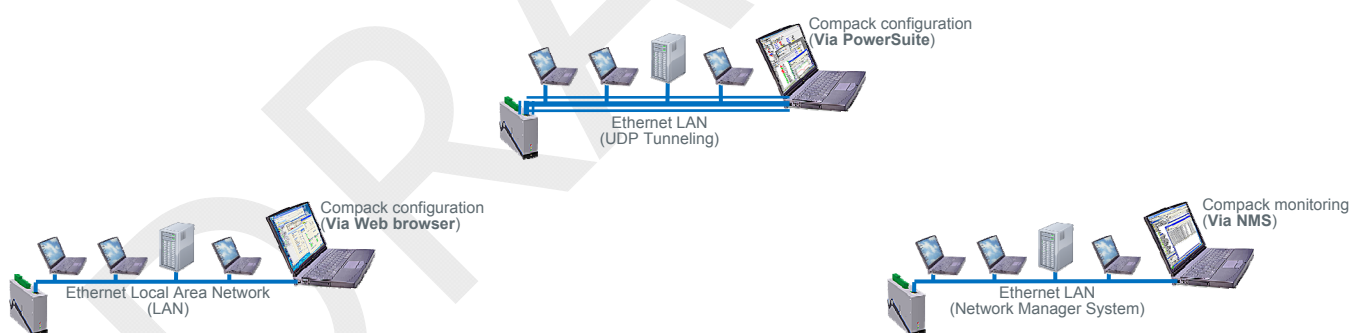


Figure 10 Power system configuration via Web browser, PowerSuite and NMS.

## Configuration — via Web Browser

You can configure and monitor the *Compack*-based DC power supply system from a computer — connected to a LAN or directly connected to the controller — using a standard Web browser to access the configuration pages stored in the *Compack* controller.

You do not need to install any programs in the computer.

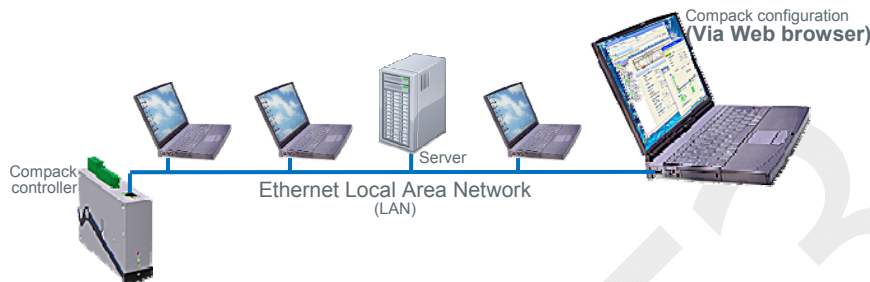


Figure 11 Power system configuration via Web browser.

For information about how to access the configuration pages stored in the *Compack* controller, read chapter “How To Change Default Log In Passwords — *Compack* GUI”, page 19.

For more detailed description of configuration options and other advanced networking services implemented by the controller, browse and search through the *Compack Online Help* file that you can download with the controller’s firmware.

## Configuration — via PowerSuite Application

You can configure and monitor the *Compack*-based DC power supply system from a computer — connected to a LAN or directly connected to the controller — using the powerful *PowerSuite* application.

You need to install the *PowerSuite* application in the computer.

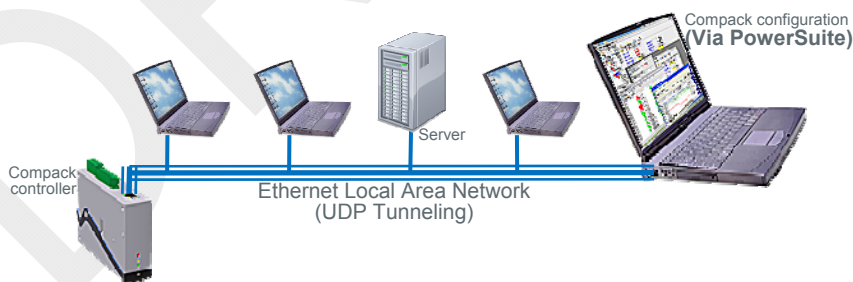


Figure 12 Power system configuration via PowerSuite application.

For acronym descriptions, refer to chapter “Glossary”, page 38 (rear cover page).

The *PowerSuite* application is originally developed for USB serial connection between the computer and the controller, using the pComm protocol.

When the controller is not equipped with an USB serial port — as is the case with the *Compack* controller — you can still use the *PowerSuite* application via an Ethernet LAN, using the UDP tunnelling protocol. *PowerSuite*’s pComm protocol is then embedded in the LAN’s IP protocol.

## In Short

To use *PowerSuite* to configure the power system via an Ethernet LAN connection, just connect the controller to the LAN. Using the "*Eltek Valere Network Utility*" program, identify the controller and make a note of its IP address. Start *PowerSuite* in your LAN connected computer, click on the "Connect" button and in the Site Manager dialog box create a new Network site with the controller's IP address.

The "Configuration — via PowerSuite Application" procedure involves following steps (as described in more detail in the next chapter):

1. Start the "Eltek Valere Network Utility" program
2. Connect the *Compack* controller to the LAN
3. Identify the controller in the "*Eltek Valere Network Utility*" program
4. Start the *PowerSuite* application in your computer (connected to the LAN)
5. In *PowerSuite*'s Site Manager, create a new Network site for the controller

For more detailed description of configuration options and other advanced networking services implemented by the controller, click any time on the *PowerSuite*'s Help buttons to browse and search through *PowerSuite Online Help*.

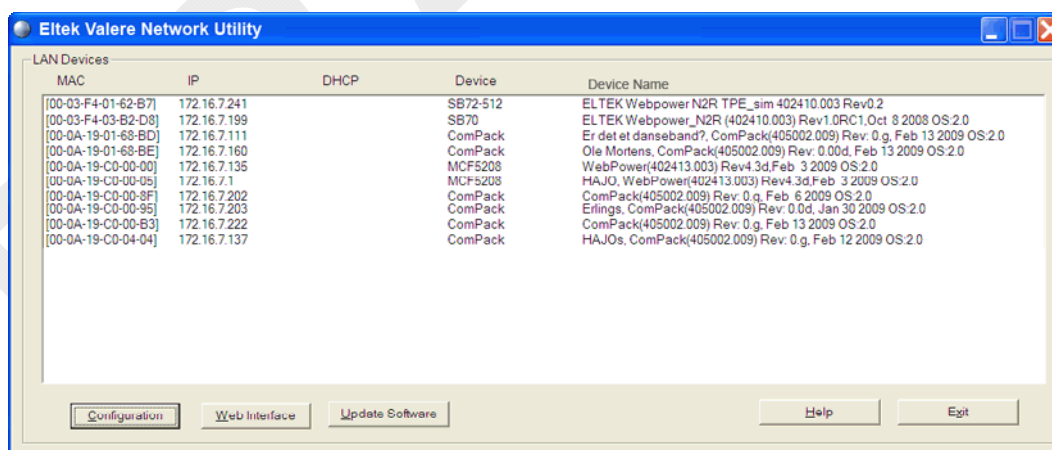
Also, refer to the *Compack Online Help* file that you can download with the controller's firmware.

For acronym descriptions, refer to chapter "Glossary", page 38 (rear cover page).

## More Detailed

Carry out the following steps to use *PowerSuite* via an Ethernet LAN connection:

1. **Start the "Eltek Valere Network Utility" program**  
by opening the file "EVIPSetup.exe", which will display already connected LAN devices. The *Compack* controller will be displayed after connection to the LAN.



(Example of connected LAN devices)

2. **Connect the *Compack* controller to the LAN**  
plugging one end of a standard Ethernet cable (straight through Ethernet cable) to the controller's RJ-45 socket on its top, and the other end to one of the LAN's available RJ-45 sockets. See "Figure 8", page 10.

The controller automatically obtains an IP address from the LAN server, as the controller's DHCP protocol is enabled from factory.

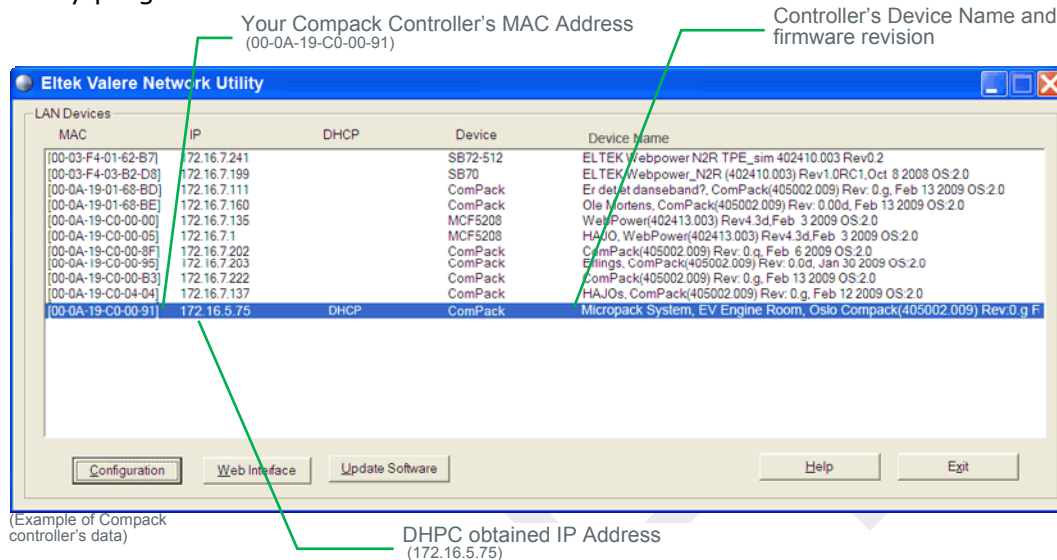


### 3. Identify the controller in the "Eltek Valere Network Utility" program

by looking for your *Compact* controller's MAC address on the list of connected LAN devices.

All controllers are shipped with a label specifying its unique MAC address. Check that the displayed MAC address corresponds to the MAC address label on the controller

Notice that it can take up to 1 minute before the connected controller is displayed in the utility program.



Make a note of the controller's IP address and Device Name.

### 4. Start the PowerSuite application in your computer by, (The computer has to be connected to the same LAN as the controller.)

— Selecting from the Start menu, in MS Windows:  
"Start > All Programs > Eltek Valere > PowerSuite"

OR

— Clicking on the *PowerSuite* icon on your computer's desktop



## 5. Create and save a new Network Site for the controller by,

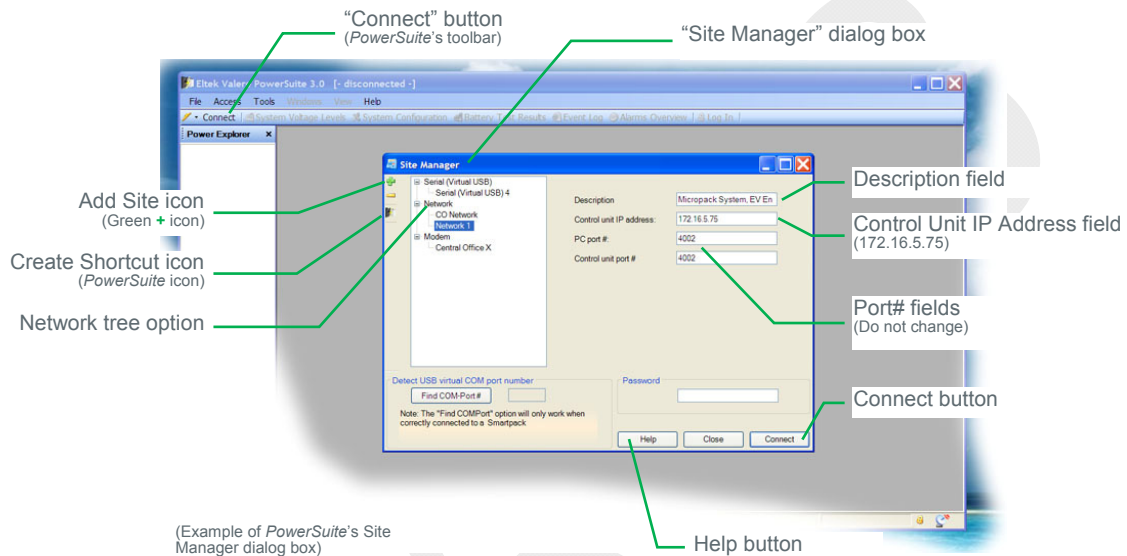
Carrying out the following:

- Click on the "Connect" button, on the *PowerSuite* toolbar
- Click on the "Network" tree option on the Site Manager dialog box
- Click on the Add Site icon (green +)
- Edit the "Description" field.

E.g. enter the controller's Device Name "Micropack System, EV Engine Room, Oslo"

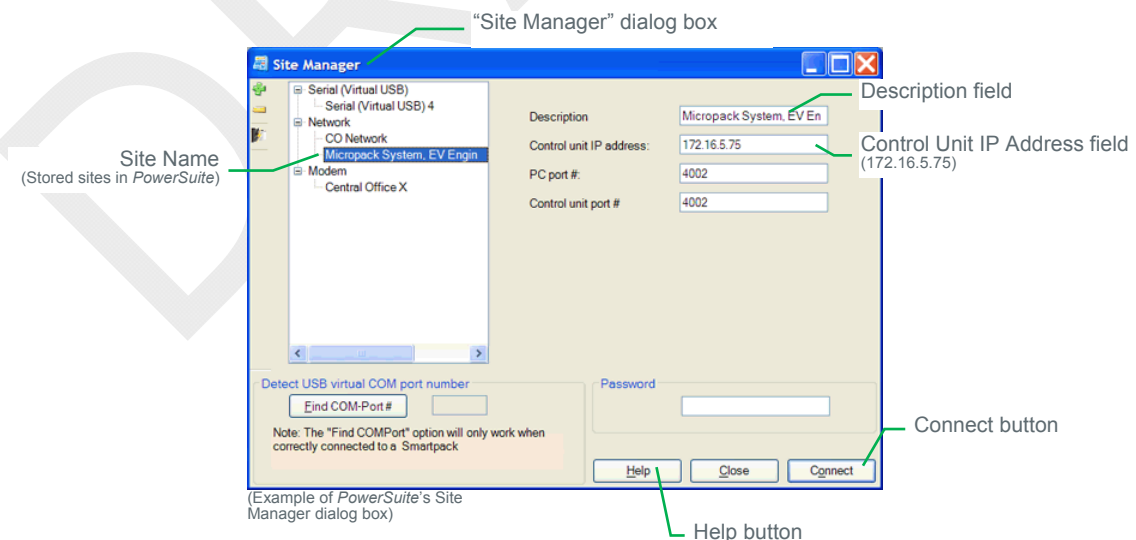
- Edit the "Control Unit IP Address" field, and enter the controller's IP address:  
e.g. "172.16.5.75". Do not change the Port# fields!

- Click on the "Connect" button, on the Site Manager dialog box



*PowerSuite* will then connect to the *CompacK* controller on the LAN with IP address "172.16.5.75".

You can any time click on the dialog box's Help button for additional description.



The set of communication parameters will be saved with the name you entered in the "Description" field, e.g.: "Micropack System, EV Engine Room, Oslo".

Next time you want to connect with this site (*CompacK* controller), click on the "Connect" button on the toolbar, select the Site Name in the Site Manager tree and click on the dialog box's "Connect" button.

## Monitoring — via Network Management System

You can remote monitor the *Compack*-based DC power supply system from a computer connected to an Ethernet LAN which has installed a Network Management System (NMS).

The NMS hardware and software must be previously installed in the LAN network.



Figure 13 Power system remote monitoring via NMS.

For acronym descriptions, refer to chapter "Glossary", page 38 (rear cover page).

### Requirements

- Computer correctly configured, connected to the LAN and with access to the NMS
- Standard Ethernet cable (straight through cable),  
to connect the controller to the LAN
- Eltek Valere's specific SNMP MIB files (Management Information Base)

Contact your IT Department, if your computer has difficulties while installing the MIB files or accessing the SNMP agent (Simple Network Management Protocol).

### In Short

The *Compack* controller implements an SNMP agent which interfaces with the Network Management System (NMS), enabling remote monitoring via the standard SNMP messaging commands SET, GET and TRAP.

The SNMP agent is compatible with all major NMS on Ethernet, such as "HP Open View", "Sun NetManager", etc.

The SNMP agent responds to SNMP's GET and SET commands, and forwards TRAPs to designated recipients when critical conditions occur to the DC power system, as configured in the *Compack* controller.

The GET commands provide the NMS with remote monitoring status — e.g. Battery status, etc. — of the power system.

The SET commands enable the NMS to remote control the power system, e.g. changing the output voltage.

The TRAP commands are unsolicited alarm messages that the power system sends to the NMS, when critical situations occur.

You can regard SNMP agents (network devices) that send TRAPs as "clients", and network devices that receive TRAPs and poll devices (issue GETs and SETs) as "servers".

The “Monitoring — via Network Management System” procedure involves following steps (as described in more detail in the next chapter):

**Compack controller SNMP configuration:**

(Refer to chapter “More Detailed”, on page 30)

1. TRAP receiver IP addresses  
(Network Managers that receive alarm messages)
2. TRAP Community Strings
3. TRAP Repeat Rates
4. Read and Write Community Strings

**NMS configuration:**

(Refer to the NMS manuals for accurate instructions)

1. Compile the Eltek Valere’s device specific MIB files into the NMS database  
(Read chapter “About Eltek Valere’s SNMP MIB Files”, page 33)
2. Add the *Compack* object to the Management Map  
(See an example of the *Compack* controller object added to the Management Map, in chapter “Example — NMS Configuration”, page 34.)
3. “Ping” the *Compack* controller to ensure connectivity
4. Define and configure the TRAP event handling, as required

For acronym descriptions, refer to chapter “Glossary”, page 38 (rear cover page).

**More Detailed — Controller SNMP Configuration**

Carry out the following steps to configure the *Compack* controller’s SNMP agent:

**1. Access the controller’s configuration pages in your Web browser**

by opening your Web browser (e.g. Internet Explorer) and entering the controller’s IP address in the browser’s address line.  
(E.g. <172.16.5.75>; entering “http://” before the address is not necessary)

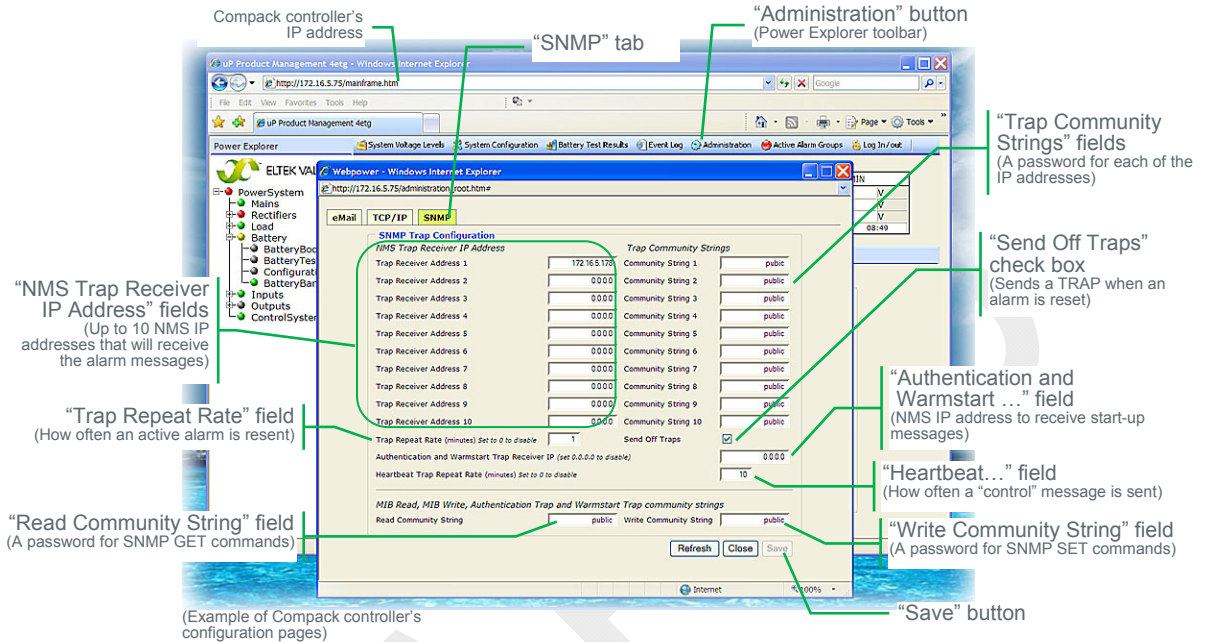
**2. Log in with the <admin> account,**

by clicking on the “Enter” link — in the Web browser, in the middle of the page — and entering <admin> as user name and <admin> as password.  
Refer also to the log in procedure in chapter “How To Change Default Log In Passwords — Compack GUI”, page 19.

Note that the Web browser must have the Pop-ups function enabled, as the configuration web pages employs Java script navigation.  
Read chapter “How To Enable Pop-ups in the browser — Internet Explorer”, page 18.

### 3. Configure the Compack controller's SNMP agent by,

- Clicking on the "Administration" button, on the Power Explorer toolbar
- Clicking on the "SNMP" tab, in the dialog box
- Entering the SNMP agent's data in appropriate fields, as described below
- Then clicking on the "Save" button, to activate the SNMP data



#### "NMS Trap Receiver IP Address" fields:

Enter the NMS IP addresses of up to 10 TRAP hosts.

When critical situations occur in the power system, the *Compack* controller's SNMP agent can unsolicited send alarm messages to up to 10 different NMS IP addresses (TRAP hosts or managers).

#### "Trap Community Strings" fields:

Enter a password for each of the 10 TRAP receivers or hosts. Default password is "public". The password entered here for each TRAP receiver, is also to be entered in the NMS TRAP Receiver List.

#### "Trap Repeat Rate" field:

Enter how often (number of minutes 0-10) the TRAP message will be resent to the receiver, while the event or alarm remains in active condition. Enter "0" not to resend.

#### "Send Off Traps" check box:

Check the box to enable sending a TRAP message when an event or alarm is reset to normal condition. Uncheck the box to disable this function.

<sup>2</sup> Community Strings or passwords can be max 19 characters long. Valid characters are A-Z, a-z, 0-9 and special characters ~@#%^&\_+=:,. Do not use any other characters.

**"Authentication and Warmstart Trap Receiver IP" field:**

Enter NMS IP address (TRAP host or manager) that will receive start-up TRAP messages.

**"Heartbeat Trap Repeat Rate" field:**

Enter how often (number of minutes 0-10) the "heartbeat", control TRAP message, will be resent to the receiver. Enter "0" to disable sending "heartbeat" messages.

**"Read Community String" field:**

Enter a password<sup>3</sup> for the SNMP agent's Read access level. Default password is "public". Network devices issuing the SNMP GET command must be configured with this password.

**"Write Community String" field:**

Enter a password for the SNMP agent's Write access level. Default password is "public". Network devices issuing the SNMP SET command must be configured with this password.

### About Community Strings

You can regard SNMP agents (network devices) that send TRAPs as "clients", and network devices that receive TRAPs and poll devices (issue GETs and SETs) as "servers".

The Community String is like a password that the "server" device issues to the "client" device during a remote query (e.g. a GET or SET command). Both the "server" and "client" devices have to use the same password.

Most network devices implement different levels of SNMP access (e.g. Read, Write, etc.) each with its password or community string.

---

<sup>3</sup> Community Strings or passwords can be max 19 characters long. Valid characters are A-Z, a-z, 0-9 and special characters ~@#%^&\_-=:,. Do not use any other characters.



## About Eltek Valere's SNMP MIB Files

The *Eltek Valere's* device specific MIB files<sup>[4]</sup> (Management Information Base) contain device description data, which is used by other SNMP requester devices in the Network Management System (NMS).

For acronym descriptions, refer to chapter "Glossary", page 38 (rear cover page).

The MIB files are in the plain-text, DOS End-of-Line format, and conform to the ASN1 coding syntax.

*Eltek Valere's* SNMP compliant devices are described in one or several MIB files, which are required for configuration of the Network Management System (NMS).

There are 3 types of *Eltek Valere* SNMP MIB files:

- The "**First-Time Installation Type**" MIB files.  
Describe a complete MIB tree structure (root and a branch) for *Eltek Valere* SNMP devices.  
Use this type of MIB file if your NMS MIB tree does NOT already contain an *Eltek Valere* SNMP MIB tree structure.
- The "**Root Type**" MIB files.  
Describe the *Eltek Valere* MIB tree base or root (no branches for SNMP devices).  
Use this type of MIB file if you want to use several *Eltek Valere* Branch MIB files simultaneously as branches in the NMS MIB tree.
- The "**Branch Type**" MIB files.  
Describe the *Eltek Valere* MIB tree branches for SNMP devices (no root).  
Use this type of MIB file if you already have the *Eltek Valere* MIB tree root compiled in the NMS MIB tree.  
You can compile several *Eltek Valere* Branch MIB files in the NMS MIB tree, thus describing different *Eltek Valere's* SNMP compliant devices (equipment).

Following table is an overview of some of the *Eltek Valere* SNMP MIB files, their MIB file type and the equipment they describe:

MIB File Type	MIB File Name	Described Eltek Valere Equipment
Root	Eltek_Root.MIB	Top file for all Eltek Valere Branch SNMP MIB files in the NMS
Branch	EltekDistributedPowerPlantV2_branch9.MIB	Smartpack controller with embedded WebPower with firmware version 4.0
Branch	EltekDistributedPowerPlantV3_branch9.MIB	Smartpack controller with embedded WebPower with firmware version 4.1 and 4.2
Branch	EltekDistributedPowerPlantV4_branch9.MIB	Smartpack controller with embedded WebPower with firmware version 4.3, and Compact controller with firmware version 1.0
First Installation	EltekDistributedPowerPlantV3.MIB	Complete Root and Branch file for Smartpack controller with embedded WebPower with firmware version 4.1 and 4.2
First Installation	EltekDistributedPowerPlantV4.MIB	Complete Root and Branch file for Smartpack controller with embedded WebPower with firmware version 4.3, and Compact controller with firmware version 1.0

<sup>[4]</sup> You can visit [www.eltekvalere.com](http://www.eltekvalere.com) to download *Eltek Valere's* device specific MIB files, or contact Eltek Valere's Service Dep.

## Example — NMS Configuration

After completing the controller's SNMP configuration — see chapter "More Detailed — Controller SNMP Configuration", page 30 — you have to configure your NMS, to complete the "Monitoring — via Network Management System" procedure.

Refer to your NMS manuals for accurate instructions about how to configure the NMS (e.g. "HP Open View", "Sun NetManager", etc.)

For acronym descriptions, refer to chapter "Glossary", page 38 (rear cover page).

Follow these general steps to configure the Network Management System:

1. Compile the *Eltek Valere's* device specific MIB files into the NMS database.  
Any suitable SNMP based NMS with MIB compiler may be used.  
(Read also chapter "About Eltek Valere's SNMP MIB Files", page 33)
2. Add the *Compack* object to the Management Map  
(The figure below is an example of the *Compack* controller object added to the Management Map.)
3. "Ping" the *Compack* controller to ensure connectivity
4. Define and configure the TRAP event handling, as required

*Eltek Valere's* unique Enterprise ID is <12148>

The screenshot displays the iReasoning MIB Browser interface. The main window shows a hierarchical MIB tree. The tree root is labeled "Eltek Valere MIB tree root (Enterprise ID is <12148>)" and is created after compiling e.g. "Eltek\_Root.MIB". The tree branches are shown as collapsed branches, created after compiling several Branch MIB files, e.g. "EltekDistributedPowerPlantV2\_branch9.MIB". A specific branch, "Eltek Valere MIB tree branch (Shown as expanded branch)", is expanded, showing a list of objects. One object, "batteryBreakerStatus", is selected. The Trap Receiver window is open, showing the configuration for the selected object. The selected object's name is "batteryBreakerStatus" and its OID is ".iso.org.dod.internet.private.enterprises.eltek.eltekDistributedPlantV4.battery.batteryBreakerStatus.0". The selected object's status is "normal (0) or alarm (1)".

Eltek Valere MIB tree root  
(Enterprise ID is <12148>)  
Created after compiling e.g. "Eltek\_Root.MIB"

Eltek Valere MIB tree branches  
(Shown as collapsed branches)  
Created after compiling several Branch MIB files, e.g. "EltekDistributedPowerPlantV2\_branch9.MIB"

Eltek Valere MIB tree branch  
(Shown as expanded branch)  
Created after compiling Branch MIB file: "EltekDistributedPowerPlantV4\_branch9.MIB"

Selected Object  
("batteryBreakerStatus")

Selected Object Name  
("batteryBreakerStatus")

Selected Object's OID  
(Object Identifier <...12148.9.3.5>)  
12148= Eltek Valere Enterprise ID  
9= Branch 9, as specified in the MIB file  
3= Sub-branch 3 ("battery")  
5= Sub-branch 5 ("batteryBreakerStatus")

Selected MIB tree branch Name  
("ELTEK\_DISTRIBUTED\_PLANTV4-MIB")

Selected Object's Status  
("normal (0) or alarm (1)")

(Example of NMS MIB tree, shown in a MIB browser)

(Example of NMS MIB tree, shown in a MIB browser)

## 5. Appendix

---

### About Control Units

---

The *Eltek Valere* control system consists of control units or hardware devices connected to the system's CAN bus. Several types of control units may be connected, such as *Compack* controller, *Smartpack* controller and other related CAN nodes.

#### CAN bus

The *Compack*- and *Smartpack*-based DC power systems utilize the CAN<sup>5</sup> bus — a digital interface architecture that supports a dedicated communication channel between the control units and each of the rectifiers.

#### CAN bus Addressing

All rectifiers and the *Compack* and *Smartpack* controllers (control units) connected to the *Eltek Valere*'s CAN bus must have a unique address or ID number.

The control system's main controller assigns automatically the rectifiers' addresses (**software assignment**).

##### Software Assignment — Rectifiers

When the rectifiers are hot-plugged in the system the first time, the system's main controller dynamically assigns the rectifiers with the next available ID number (software-assignment), and automatically increases the number of communicating rectifiers on the CAN bus. Also, the controller registers the rectifiers' ID numbers, or CAN bus address (01, 02...), together with their serial numbers.

When a previously installed rectifier is again hot-plugged in the system, it retains its previous ID and serial number, unless reassigned during a Reset Rectifier command.

**WARNING:** To replace installed rectifiers with new ones, remove the installed rectifiers and wait for the controller to notify communication error with the extracted rectifiers. Push the new rectifiers firmly inwards — one module at a time, allowing a 2s delay — to plug them in the system. Start with the position with lowest ID number. Lock their handles.

When a new main system controller is inserted in an existing system, the controller will recalculate the number of connected rectifiers, reassigning them with the same ID numbers as they already have in memory.

##### Hardware Assignment — Control Units

The *Compack* and *Smartpack* controllers are factory configured with a CAN bus ID number (hardware-assignment).

---

<sup>5</sup> Control Area Network. Serial protocol utilised for communication between *Eltek Valere*'s rectifiers and controllers





## 6. Glossary

Term	Description
Browser	Short for Web browser, a software application used to locate and display Web pages. The two most popular browsers are Microsoft Internet Explorer and Firefox. Both of these are graphical browsers, meaning that they can display graphics as well as text. In addition, most modern browsers can present multimedia information, including sound and video, though they require plug-ins for some formats.
CAN	Control Area Network. Serial protocol utilized for communication between Eltek Valere's rectifiers and controllers.
Crossover cable	An Ethernet crossover cable is a type of Ethernet cable used to connect computing devices together directly where they would normally be connected via a network switch, hub or router, such as directly connecting two personal computers via their network adapters. The 10BASE-T and 100BASE-TX Ethernet standards use one wire pair for transmission in each direction. The Tx+ line from each device connects to the tip conductor, and the Tx- line is connected to the ring. This requires that the transmit pair of each device be connected to the receive pair of the device on the other end. When a terminal device is connected to a switch or hub, this crossover is done internally in the switch or hub. A standard straight through cable is used for this purpose where each pin of the connector on one end is connected to the corresponding pin on the other connector.
DHCP	Dynamic Host Configuration Protocol (DHCP) is a network application protocol used by devices (DHCP clients) to obtain configuration information for operation in an Internet Protocol network. This protocol reduces system administration workload, allowing devices to be added to the network with little or no manual intervention.
Ethernet	Local Area Network technology. Ethernet provides data transfer using a baseband (single-channel) communication technique. Ethernet uses carrier sense multiple access collision detection (CSMA/CD) that prevents network failures when two devices attempt to access the network at the same time. A 10/100 Ethernet port supports 10BASE-T and 100BASE-TX.
FTP Server	Trivial File Transfer Protocol Server (TFTP). A host to provide services according to TFTP; a TCP/IP standard protocol for file transfer with minimal capability and overhead depending on UDP for its datagram delivery service.
GUI	Pronounced GOO-ee. Acronym for graphical user interface. A program interface that takes advantage of the computer's graphics capabilities to make the program easier to use. Well-designed graphical user interfaces can free the user from learning complex command languages. On the other hand, many users find that they work more effectively with a command-driven interface, especially if they already know the command language.
HUB	A common connection point for devices in a network. Hubs are commonly used to connect segments of a LAN. A hub contains multiple ports. When a packet arrives at one port, it is copied to the other ports so that all segments of the LAN can see all packets.
I/O	Short for Input /Output. The term I/O is used to describe any program, operation or device that transfers data to or from a computer and to or from a peripheral device. Every transfer is an output from one device and an input into another.
IP Address	The Internet Protocol Address IP version 4 addresses (IPv4) uses 32-bit (4-byte) addresses, which limits the address space to 4,294,967,296 possible unique addresses. However, IPv4 reserves some addresses for special purposes such as private networks (~18 million addresses) or multicast addresses (~270 million addresses). IPv4 addresses are usually represented in dot-decimal notation (four numbers, each ranging from 0 to 255, separated by dots, e.g. 208.77.188.166). Each part represents 8 bits of the address, and is therefore called an octet.
LAN	Local Area Network A local area network is a computer network covering a small physical area, like a home, office, or small group of buildings, such as a school, or an airport. Current LANs are most likely to be based on Ethernet technology.
LVBD	Low Voltage Battery Disconnect contactor. System internal latching contactor that disconnects the battery bank from the load, when a certain voltage limit is reached or other battery critical events occur.
MAC Address	Media Access Control Address. Every Ethernet network card has a unique 48-bit serial number called a MAC address, which is stored in ROM carried on the card. Every computer on an Ethernet network must have a card with a unique MAC address. Normally it is safe to assume that no two network cards will share the same address, because card vendors purchase blocks of addresses from the Institute of Electrical and Electronics Engineers (IEEE) and assign a unique address to each card at the time of manufacture.
MIB	Management Information Base, a database of objects that can be monitored by a network management system. SNMP uses standardized MIB formats that allows any SNMP tools to monitor any device defined by a MIB
Mini Hub	A common connection point for devices in a network. Hubs are commonly used to connect segments of a LAN. A hub contains multiple ports. When a packet arrives at one port, it is copied to the other ports so that all segments of the LAN can see all packets
NIC	Network Interface Controller. A network card, network adapter, network interface controller, network interface card, or LAN adapter is a computer hardware component designed to allow computers to communicate over a computer network. It is both an OSI layer 1 (physical layer) and layer 2 (data link layer) device, as it provides physical access to a networking medium and provides a low-level addressing system through the use of MAC addresses. It allows users to connect to each other either by using cables or wirelessly.



Term	Description
NMS	Network Management Station -An SNMP Manager application which interfaces with the SNMP Agent and provides communication capabilities through standard SNMP messaging commands (SET, GET). The NMS also serves to collect SNMP TRAP events. A Network Management System (NMS) is a combination of hardware and software used to monitor and administer a network.
pComm	RS232 serial protocol used by <i>Eltek Valere's</i> controllers for communication with computers, modems, WebPower adapters and other equipment.
Pop-up	A window that suddenly appears (pops up) when you select an option with a mouse or press a special function key. Usually, the pop-up window contains a menu of commands and stays on the screen only until you select one of the commands. It then disappears. A special kind of pop-up window is a pull-down menu, which appears just below the item you selected, as if you had pulled it down.
PowerSuite	PC application used to configure and operate Micropack, Minipack, Flatpack2 and Powerpack DC power supply systems. The program is to be run on computers using the MS Windows operating systems.
RJ-45	Short for Registered Jack-45, an eight-wire connector used commonly to connect computers onto local area networks (LAN), especially Ethernets. RJ-45 connectors look similar to the ubiquitous RJ-11 connectors used for connecting telephone equipment, but they are somewhat wider.
SNMP	Simple Network Management Protocol, a set of protocols for managing complex networks. The first versions of SNMP were developed in the early 80s. SNMP works by sending messages, called protocol data units (PDUs), to different parts of a network. SNMP-compliant devices, called agents, store data about themselves in Management Information Bases (MIBs) and return this data to the SNMP requesters.
SNMP Agent	An SNMP-compliant device that stores data about itself in Management Information Bases (MIBs) and return this data to the SNMP requesters.
TCP/IP	Transmission Control Protocol/Internet Protocol A protocol suite used by more than 15 million users with a UNIX association and widely used to link computers of different kinds. The Internet Protocol Suite (commonly known as TCP/IP) is the set of communications protocols used for the Internet and other similar networks. It is named from two of the most important protocols in it: the Transmission Control Protocol (TCP) and the Internet Protocol (IP), which were the first two networking protocols defined in this standard.
Tunnelling Protocol	The term tunnelling protocol is used to describe when one network protocol called the payload protocol is encapsulated within a different delivery protocol.
UDP	The User Datagram Protocol (UDP) is one of the core members of the Internet Protocol Suite, the set of network protocols used for the Internet. With UDP, computer applications can send messages, sometimes known as datagrams, to other hosts on an Internet Protocol (IP) network without requiring prior communications to set up special transmission channels or data paths. UDP is sometimes called the Universal Datagram Protocol.
USB	Universal Serial Bus is a serial bus standard to interface devices to a host computer. USB was designed to allow many peripherals to be connected using a single standardized interface socket and to improve plug and play capabilities by allowing hot swapping, that is, by allowing devices to be connected and disconnected without rebooting the computer or turning off the device. Other convenient features include providing power to low-consumption devices without the need for an external power supply and allowing many devices to be used without requiring manufacturer specific, individual device drivers to be installed.
VPN	A virtual private network (VPN) is a computer network in which some of the links between nodes are carried by open connections or virtual circuits in some larger network (e.g., the Internet) as opposed to running across a single private network. The link-layer protocols of the virtual network are said to be tunneled through the larger network. One common application is secure communications through the public Internet, but a VPN need not have explicit security features, such as authentication or content encryption. VPNs, for example, can be used to separate the traffic of different user communities over an underlying network with strong security features.
WAN	Wide Area Network is a computer network that covers a broad area (i.e., any network whose communications links cross metropolitan, regional, or national boundaries [1]). Less formally, a WAN is a network that uses routers and public communications links [1]. Contrast with personal area networks (PANs), local area networks (LANs), campus area networks (CANs), or metropolitan area networks (MANs) are usually limited to a room, building, campus or specific metropolitan area (e.g., a city) respectively. The largest and most well-known example of a WAN is the Internet.
WebPower	A common name for the firmware installed in Eltek Valere's WebPower adapter module. The firmware provides a communication protocol translator, a physical layer conversion and Web server software. WebPower translates the Smartpack controller's pComm protocol into the HTTP protocol over TCP/IP, used to communicate in the Ethernet network. The WebPower software provides a graphical user interface (GUI), employed to configure and operate Minipack, Flatpack2 and Powerpack DC power supply systems using a standard Web browser.



---

[www.eltekvalere.com](http://www.eltekvalere.com)

Headquarters:  
**Eltek Valere**  
1303 E. Arapaho Rd, Richardson, TX. 75081, USA  
Phone: +1 (469) 330-9100 Fax: +1 (469) 330-9101

**Eltek Valere**  
Gråterudv. 8, Pb 2340 Strømsø, 3003 Drammen, Norway  
Phone: +47 32 20 32 00 Fax: +47 32 20 32 10